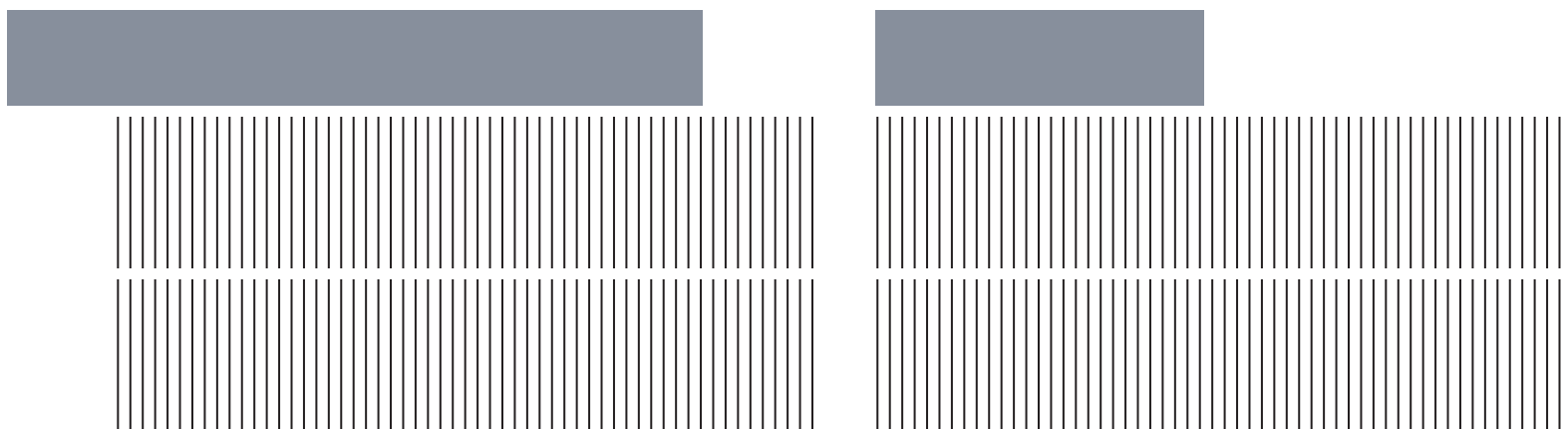


LA NOTTE

CONTENITORI NOTTE

BEDROOM UNITS



TOMASELLA

LA NOTTE

CONTENITORI NOTTE

BEDROOM UNITS

CONTENITORI NOTTE LEGNO & LACCATI PAG. 4
WOOD & LACQUERED BEDROOM UNITS

CONTENITORI NOTTE MATERICI & LACCATI PAG. 40
TEXTURED & LACQUERED BEDROOM UNITS

AREA TECNICA PAG. 102
TECHNICAL INFORMATION

FINITURE E COLORI PAG. 126
FINISHES AND COLOURS

PAGINE SINTESI PAG. 134
SUMMARY

Comò, comodini e settimanali sono molto più di semplici contenitori, sono arredi che completano la camera da letto con la loro funzionalità e il loro stile. Lineari o curvilinei, essenziali o di design, colorati o naturali: ad ogni tipologia di notte, il suo gruppo.

Chest-of-drawers and tall boys are more than mere pieces of self-standing furniture because they complete the bedroom with their functions and style. Linear or curvy, coloured or natural, minimalist or designer pieces: each style comes into its own in one of our models.

CONTENITORI NOTTE

BEDROOM UNITS

LEGNO & LACCATO WOOD FINISHES & LACQUERS

Bogart pag. 34



Brando pag. 18



Dolcevita pag. 24



Morfeo pag. 6



Pass pag. 12



Tivoli pag. 30



MATERICO & LACCATO TEXTURED FINISHES & LACQUERS

Argo pag. 64



Athena pag. 78



Capitol pag. 92



Hashtag pag. 50



Kross pag. 98



Replay pag. 42



Sir pag. 72



Vinci pag. 58



Vip pag. 84



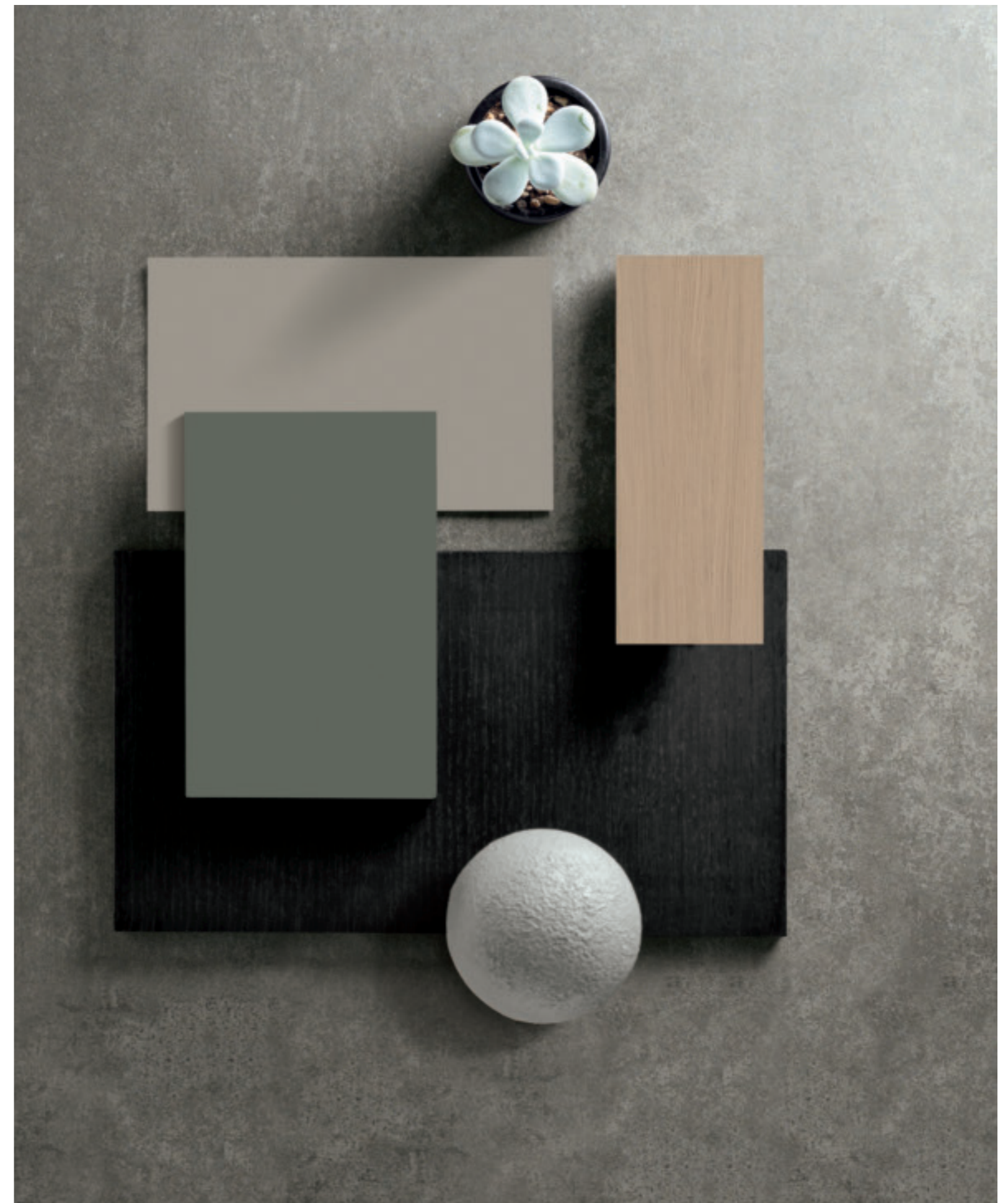
CONTENITORI NOTTE LEGNO & LACCATO

WOOD & LACQUERED BEDROOM UNITS

Il legno, in tutte le sue varianti e colorazioni, esprime un calore naturale che dagli arredi si diffonde in tutto l'ambiente creando un'atmosfera accogliente.

Una perfetta armonia tra materia, forma e funzione per dare personalità e stile alla notte.

In all its versions and colours, wood expresses natural warmth that spreads from the furniture to the whole room, creating an inviting and cosy atmosphere. This perfect harmony of materials, forms and functions lends style and personality to your nights.



MORFEO



Un gruppo dalle linee pulite e ben definite, ma non scontate: la curvatura degli spigoli del top caratterizza il design degli arredi e addolcisce i volumi. Il comò ha un lato nascosto, tutto da scoprire... e aprire.

This set of bedroom furniture features clean-cut, well-defined yet not commonplace lines: the curved edges of the top distinguishes its design and softens its volumes. The chest-of-drawers features a concealed side just waiting to be discovered... and opened.

Morfeo contenitori / units
Comò laccato opaco bromo 176.
Comodini legno rovere carbone.
Settimanali laccato opaco fumo 174.
Chest-of-drawers in matt bromine 176 lacquer.
Bedside tables in coal oak wood.
Matt smoky grey 174 lacquered tall boys.





Morfeo contenitore / unit
Comò laccato opaco bromo 176.
Chest-of-drawers in matt bromine 176
lacquer.

Loft poltroncina / armchair
Caruso tavolino / coffee table
Bolle specchiera / mirror



Il comò Morfeo ha un piano estraibile che svela un pratico vano portaoggetti. Un "secrétaire" moderno e una soluzione originale per custodire con cura gioielli e altri piccoli accessori.

The Morfeo chest-of-drawers features a slide-out top that reveals a practical tidy tray that can serve as a modern desk tidy or an original way of storing and protecting jewellery and other small accessories.



PASS

A prima vista il gruppo si presenta con un'evidente linearità, ma in realtà il suo carattere è enfatizzato dal taglio obliquo dello spessore sia dei cassetti, sia del top. Arredi passepartout per tutte le tipologie di notte.

At first sight this set of furniture stands out for its linearity but at a closer look its character is enhanced by the oblique slant of the drawer and of the top panel. This versatile model is perfect for any style of bedroom.

Pass contenitori / units

- Comò legno rovere moka.
- Comodino laccato opaco bromo 176.
- Comodini legno rovere sabbia.
- Settimanali laccato lucido tabasco 171.
- Mocha oak wood chest-of-drawers
- Bedside table in matt bromine 176 lacquer.
- Bedside tables in sand oak wood.
- Tall boys in gloss tabasco 171 lacquer.





Il fianco rientra rispetto ai frontali e questo dettaglio dà un tocco di originalità al design. Di lato, si nota il taglio obliquo dello spessore che, oltre a essere una pratica presa maglia, diventa il tratto distintivo di tutto il gruppo.

The front panel protrudes beyond the side panels, creating a detail that lends originality to the design. The slanting side edge on the front panel - which, as well as serving to open the drawers, is the distinctive trait of this model - is clearly visible from the side.



Pass contenitore / unit
Comò laccato Fumo opaco 174.
Chest-of-drawers in matt smoky
grey 174 lacquer.



Pass contenitori / units
Comodini legno rovere moka.
Mocha oak wood bedside tables.

Dalia letto / bed

BRANDO

Il design curvilineo e arrotondato evoca l'estetica degli anni Settanta e dà agli arredi un tocco vintage. I frontali e il top possono avere finiture diverse per creare combinazioni cromatiche e materiche personalizzate.

This curvy, rounded design brings to mind the Sixties style and lends a vintage touch to these units. The fronts and tops can come in different finishes to create customised combinations of colours and textures.

Brando contenitori / units

Comò legno rovere moka, Top gres cat. elegance urban marble.

Comodino legno rovere sabbia, top cat. premium calacatta oro.

Settimanali legno rovere moka, top cat. premium emperador.

Mocha oak wood chest-of-drawers, cat. elegance urban marble stoneware top.

Sand oak wood bedside table, cat. premium calacatta oro top.

Mocha oak wood tall boys, cat. premium emperador tops.





Gli angoli curvi dei cassetti non sono un semplice dettaglio formale, bensì caratterizzano la sostanza della notte. La forma arrotondata e le venature del rovere moka contribuiscono a trasformare lo spazio in un luogo armonioso e accogliente.

Since they actually characterise the essence of the night, the curved edges of the drawers can't be considered a mere formal detail. The rounded shape and the mocha oak wood grain contribute to transforming spaces into harmonious, cosy places.



Brando contenitore / unit
Comodini e comò legno rovere moka.
Top gres cat. elegance Fokos terra.

Mocha oak wood chest-of-drawers and
bedside tables.
Cat.elegance fokos terra stoneware top.

Bolle specchiera / mirror



Brando contenitore / unit
Comodino legno rovere moka,
top gres cat. elegance amani.
Mocha oak wood bedside table,
cat.elegance amani stoneware top.

Eros letto / bed

DOLCEVITA

Dolcevita contenitori / units

Comò senza basamento laccato opaco salina 163.

Comodini in legno rovere carbone, basamento legno rovere carbone.

Base-less chest-of-drawers in matt salt grey 163 lacquer.

Bedside tables in coal oak wood.

Comò laccato opaco hot 127, basamento legno rovere moka.

Settimanale legno rovere moka, basamento legno rovere moka.

Matt hot grey 127 lacquered chest-of-drawers with mocha oak wood base. Mocha oak wood tall boy with mocha oak wood base.

Gli angoli arrotondati e i piedini portano un tocco di dolcezza nella vita di tutti i giorni, anzi di tutte le notti. Un gruppo di arredi perfetto per arredare ambienti eleganti, dall'allure classico.

Rounded corners and feet add a touch of softness to everyday life, and to your nights as well. A perfect set of units to furnish elegant rooms with a classic appeal.





Due finiture: la tonalità chiara del laccato opaco hot 127 e le calde venature del rovere rendono l'arredo ancora più dolce e la notte più delicata.

Two finishes: the light matt hot grey 127 shade and warm oak grain add even more charm to this piece of furniture, and more gentleness to the night.



Dolcevita contenitore / unit
Comò laccato opaco hot 127
e basamento in legno rovere carbone.
Matt hot grey 127 lacquered chest-of-drawers
with a coal oak wood base.



Il comò è disponibile anche senza piedini per un design e un gusto senza tempo. La finitura rovere moka trasmette un senso di calore all'intero ambiente.

The chest-of-drawers is also available without feet for a timeless design that never goes out of fashion. The mocha oak finish transmits a sense of warmth throughout the room.

TIVOLI

Gli arredi del gruppo si distinguono per la curvatura dei fianchi e gli angoli smussati dei cassetti. Intorno ai frontali si forma una cornice che valorizza ulteriormente il design e crea una presa maniglia laterale.

This set of furniture stands out for its curved side panels and for the bevelled edges of its drawers. A frame takes shape around the fronts, enhancing the design while also creating a side grip recess.



Tivoli contenitori / units

Comò laccato opaco ghiaccio 173.

Comodini in legno rovere carbone.

Settimanale laccato opaco bromo 176.

Chest-of-drawers in matt ice 173 lacquer.

Bedside tables in coal oak wood.

Matt bromine 176 lacquered tall boys.

Bolle specchiera / mirror



La finitura laccato opaco carta da zucchero 155 rende più moderne le forme arrotondate del comò. Una scelta perfetta per chi ama dare un tocco di colore all'arredo, senza eccessi.

The matt blue grey 155 lacquered finish adds a touch of modernity to the rounded shapes of this chest-of-drawers. A perfect choice for those who like to add a touch of colour to their furniture, without overdoing it.



Tivoli contenitore / unit
Comò laccato opaco carta
da zucchero 155.
Chest-of-drawers in matt blue
grey 155 lacquer.

BOGART



Bogart contenitori / units
Comò legno rovere moka.
Comodini legno rovere moka.
Settimanali laccato opaco salina 163.
Mocha oak wood chest-of-drawers.
Mocha oak wood bedside tables.
Matt salt grey 163 lacquered tall boys.

Il gruppo è caratterizzato dal design curvilineo, dal top arrotondato e dalla maniglia intagliata elegantemente nei frontali. Si abbina perfettamente sia a letti dalle linee squadrate che a quelli dalla forma più morbida.

This model features a curvy design, a rounded top and a handle that is carved elegantly into the fronts. It is perfect paired with square beds but looks just as good with those featuring softer shapes as well.

La finitura rovere moka dà al comò un aspetto sofisticato: le venature scure e intense fanno risaltare la lavorazione della maniglia integrata. La scelta ideale per chi cerca un arredo di classe.

The mocha oak finish lends a sophisticated air to the chest-of-drawers: deep, dark veins bring out the beauty of the integrated handles. The ideal choice for anyone looking for stylish furniture.

Bogart contenitore / unit
Comò legno rovere moka.

Chest-of-drawers in
mocha oak wood.





Le venature del rovere moka scaldano il comodino, accentuano la morbidezza delle forme, e danno a tutto l'ambiente un gusto inconfondibile.

The oak grain adds warmth to the bedside unit, enhancing its shape and giving the whole room an unmistakable atmosphere.



Bogart contenitore / unit
Comodino legno rovere moka.
Mocha oak wood bedside table.

Sogno letto / bed

CONTENITORI NOTTE MATERICI & LACCATI

TEXTURED & LACQUERED BEDROOM UNITS

I materiali naturali ispirano finiture ricercate
che rivestono arredi di design:
dalle venature dei legni alla matericità delle pietre,
dagli effetti metallizzati
agli intrecci delle trame, ogni scelta e ogni abbinamento
rendono la notte unica e personalizzata.

Natural materials inspire refined finishes
that dress designer furniture: from wood
grain to textured stone, from metallic effects to woven
patterns, every choice
and every combination makes your night
unique and customised.



Replay contenitori / units

Comò materico rovere sabbia,
laccato opaco bromo 175,
top materico rovere sabbia.

Comodino materico rovere carbone,
laccato finitura opaco zafferano 158,
top grafica japan 01.

Chest-of-drawers in textured sand oak and
matt bromine 175 lacquer; sand oak top.

Bedside unit in textured coal oak and matt
saffron 158 lacquer; the top features the
japan 01 graphic design.

Comò materico piacentina scura,
materico rovere carbone,
top materico rovere carbone.

Comodino materico piacentina scura,
top materico noce ambra.

Chest-of-drawers in textured dark
piacentina and textured coal oak;
textured coal oak top.

Bedside table in textured dark piacentina,
textured amber walnut top.

Settimanali laccato opaco zafferano 158,
top vetro satinato zafferano 458.

Comodino materico noce ambra,
top materico alpaca.

Tall boys in matt saffron 158 lacquer,
satin saffron 458 glass top.

Bedside table in textured amber walnut,
textured alpaca top.

La notte gioca con i volumi, le geometrie, i contrasti cromatici e le matericità. A terra o sospesi i comodini, sfalsati i moduli del comò: il gruppo offre infinite combinazioni possibili per arredare la camera da letto.

The night plays with volumes, geometric shapes, colour contrasts and textures. Bedside tables are floor-standing or wall-hung, chest-of-drawer modules are offset: this model offers an endless array of possible bedroom furnishing combinations.



I moduli del gruppo Replay possono essere sovrapposti e affiancati per creare combinazioni inedite e personali: come quella ad angolo, in cui il comodino diventa un tutt'uno con il comò.

The modules of the Replay model can be stacked and fitted side-by-side to create unusual, customised combinations like this corner one in which the bedside table becomes part of the chest-of-drawers.

Replay contenitore / unit

Composizione materico cemento cava, materico rovere moka, top materico rovere moka.

Arrangement in textured quarry cement and textured quarry oak with textured mocha oak tops.

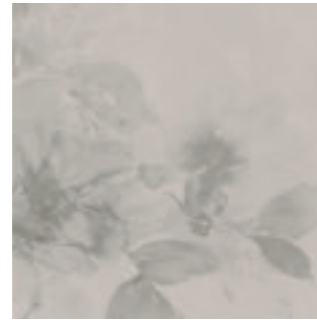
Skyline letto / bed

Replay

VETRO GRAPHIC PER TOP REPLAY / GRAPHIC GLASS FOR THE REPLAY TOP



Flower 01



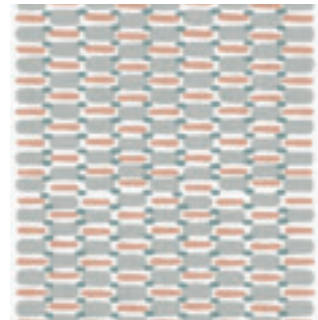
Flower 02



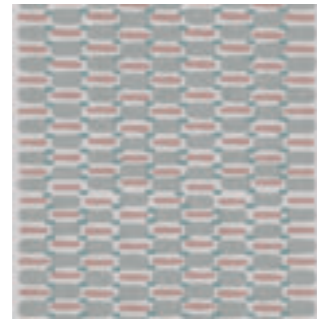
Flower 03



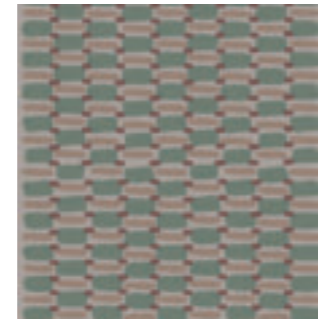
Flower 04



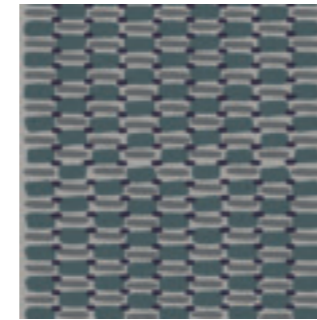
Geometric 01



Geometric 02



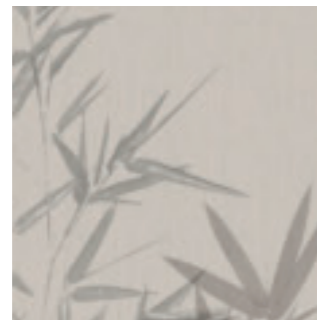
Geometric 03



Geometric 04



Japan 01



Japan 02



Japan 03



Japan 04

Replay aggiunge un tocco decorativo:
il top in vetro è infatti impreziosito da una disegno
grafico che conferisce originalità all'arredo in sé e
all'ambiente nel suo insieme.

Replay adds a decorative touch:
the glass top is embellished with a graphic design
that adds originality to the units,
and to the room as well.



Replay contenitore / unit
Comodino materico opaco arena,
top in vetro con grafica Japan 03.

Textured matt arena bedside table,
glass top with Japan 03 graphic design.

Strong letto / bed



I moduli del gruppo Replay sono sovrapposti i per creare combinazioni inedite e personali, valorizzate da abbinamenti di colori e materiali. Il top in gres aggiunge matericità alle geometrie e l'arredo conquista pienamente la notte.

The modules of the Replay model are stacked to create unusual, personal combinations, enhanced by matching colours and materials. The stoneware top adds textural charm to the geometry of this unit, contributing to winning the favour of the night.



Replay Gres contenitore / unit
Comò laccato opaco basalto 177 e materico rovere moka.
Top gres cat. Elegance Fokos piombo.
Matt basalt 177 lacquered and textured mocha oak chest-of-drawers.
Top in cat. elegance fokos piombo stoneware.

Liscia armadio / wardrobe

HASHTAG



Il gruppo è definito dalle linee sottili in rilievo sui frontali che sono molto decorative, oltre che funzionali: i profili orizzontali, infatti, sono maniglie che possono essere a contrasto o tono su tono rispetto alla finitura dell'arredo.

This set of furniture is defined by the slim lines that decorate its fronts but that also serve a functional purpose: the horizontal trims are also handles that can be chosen in a contrasting shade or tone-on-tone with the finish of the unit.

Hashtag contenitori / units

Comò materico noce ambra,
profili lava 175, top vetro lucido lava 375.
Comodini laccati opachi ghiaccio 173,
profili metallo ghiaccio 173, top noce ambra.
Settimanali laccati opachi tabasco 171,
profili tabasco 171, top vetro satinato tabasco 471.
Chest-of-drawers in textured amber walnut, lava 175
trims, gloss lava 375 glass.
Matt ice 173 lacquered bedside tables.
with ice 173 trims, amber walnut top.
Matt tabasco 171 lacquered tall boys with
tabasco 171 trims with satin tabasco 471 glass tops.





Sul comò in materico cemento cava, le maniglie sottili sono in tinta e quindi si integrano armoniosamente nell'arredo. Il top in materico nodato chiaro crea un piacevole e delicato contrasto visivo.

The slim handles in textured quarry cement fit harmoniously on the chest-of-drawers since they match its colour. The light knotted textured top creates a pleasant and delicate visual contrast.



Hashtag contenitore / unit
Comò materico cemento cava, profili in tinta e top materico nodato chiaro.
Textured quarry cement, matching-coloured trims and light knotted textured top.

Joy Decor tavolino / beside table
Kalista servetto / rack chair



Hashtag contenitori / units
Comodini materico opaco arena,
top materico rovere moka
e profili antracite 160.
Bedside tables in textured matt arena,
textured mocha oak tops
and anthracite 160 trims.

Diagonal letto / bed

Sulla coppia di comodini in materico arena si fanno notare le maniglie antracite 160 e il top in materico rovere moka. Una selezione di finiture in palette con la testiera del letto per un effetto coordinato tra gli arredi.

The anthracite 160 handles and the textured mocha oak top stand out on this pair of bedside tables in textured arena. For a coordinated look, the finishes have been selected to match those of the bed headboard.



La notte è giovane: le maniglie colorate, in tinta con il top ma in contrasto con i frontali, disegnano su comò e comodini dei segni grafici originali. Da simbolo, l'hashtag diventa un nuovo modo di esprimersi anche nel design.

The night is young: the coloured handles match the top but contrast with the fronts, designing a chest-of-drawers and bedside tables with original graphic lines. The hashtag goes from being a mere symbol to expressing itself in a new way on designer furniture.



Hashtag contenitori / units
Comodino e comò laccato opaco
basalto 177, top laccato opaco
basalto 177 e profili antracite 160.
Matt basalt 177 lacquered bedside tables
and chest-of-drawers with matt basalt 177
lacquered tops and anthracite 160 trims.

Bravo Plus letto / bed
Fortebraccio libreria / bookcase



Vinci contenitori / units

Comò materico piasentina scura,
materico rovere moka, profili metallo antracite 160.

Comodini legno rovere sabbia canetté,
laccato opaco mirto 165, profili metallo mirto 165.

Settimanali laccato opaco arena 178,
profili metallo antracite.

Chest-of-drawers in textured dark piasentina
and textured mocha oak 160; anthracite metal
trims. Bedside units in reeded sand oak and matt
myrtle 165 lacquer; myrtle metal trims.

Matt arena 178 lacquered tall boys with 160
anthracite metal trims.

Il profilo in metallo incornicia i cassetti degli arredi: un dettaglio per distinguere le diverse finiture e, allo stesso tempo, per dare più spessore ai frontali. Ogni combinazione possibile mostra e dimostra l'originalità del gruppo.

The metal trim frames the drawers, a detail that distinguishes the various finishes while simultaneously making the fronts look thicker. Every possible combination proves how original this set of furniture can be.



Sia sui comodini che sul comò, il profilo in metallo antracite è una vera e propria cornice che mette in evidenza le due finiture dei cassetti: rovere moka canettè e specchio bronzato 382. Un abbinamento ispirato agli anni Settanta.

The anthracite metal trim on the bedside units and chest-of-drawers creates a real frame that sets off the two different drawer finishes: reeded mocha oak and bronzed 382 mirror for a pairing inspired by the Seventies.



Vinci contenitori / units
Comò e comodino materico rovere moka, rovere moka canettè, specchio bronzato 382 e profili metallo antracite.
Chest-of-drawers and bedside unit in textured mocha oak, reeded mocha oak, bronzed 382 mirror and anthracite metal trims.

Dalia letto / bed
Bolle specchiera / mirror

Il profilo in metallo è un dettaglio dal sapore urban che racchiude e dà risalto alle due finiture materico piasentina scura e materico rovere carbone. Il comò è minimal nel design e forte nel carattere.

The metal trim is an urban-style detail that encloses and enhances the two textured dark piasentina and textured coal oak finishes. This chest-of-drawers boasts a minimalist design paired with a strong personality.



Vinci contenitore / unit
Comò materico rovere carbone,
materico piasentina scura e profilo
metallo antracite.
Vinci contenitore / unit
Chest-of-drawers in textured coal oak
and textured dark piasentina; anthracite
metal trims.
Visage 1 quadro tela / canvas picture

ARGO



Argo contenitori / units

Comò laccato opaco ghiaccio 178,
top materico noce ambra.

Comodini materico rovere moka,
basamento Tracks metallo antracite/ottone.

Comodini materico opaco arena, top materico
rovere moka. Settimanale laccato
opaco bosco 168.

Matt ice 178 lacquered chest-of-drawers with a
textured amber walnut top.

Bedside tables in textured mocha oak
with a Tracks base in anthracite/brass metal.

Textured matt arena bedside units,

Textured mocha oak tops. Matt forest green 168
lacquered tall boys.

Il gruppo ha molteplici varianti: gli arredi sono disponibili con o senza basamento e con top spessore 6 o 2 cm, il comodino ha una versione large e il comò può essere dotato di un top scorrevole che diventa un funzionale scrittoio.

This model is available in many versions: with or without a base and with a 6 or 2 cm thick top. The bedside table can come in a larger version and the chest-of-drawers can be provided with a sliding top that becomes a practical desk.



Il comò Argo ha un piano che scorre agevolmente sul top per creare all'interno della camera da letto un pratico angolo home office o una stilosa postazione make up.

The Argo chest-of-drawers features an additional top that glides effortlessly over the one below it, creating a practical home office corner or a stylish dressing table in the bedroom.



Argo contenitore / unit
Comò con piano estraibile
materico rovere carbone
e laccato opaco mirto 165.
Chest-of-drawers with pull-out
top in textured coal oak and matt
myrtle 165.

Guccini pouf.



Argo contenitore / unit
Comodino materico rovere carbone.
Textured coal oak bedside table.

Dalia letto / bed

Oltre al comò a tre cassetti, ai comodini e al settimanale, la collezione Argo ha inedite configurazioni: il comodino è disponibile nella versione large.

As well as a three-drawer chest, bedside tables and tall boys, the Argo collection offers never-before-seen configurations: the bedside table is also available in the large version.



Argo è disponibile con basamento Tracks, in metacrilato trasparente e nella versione a terra. I contenitori notte Argo sono disponibili con top spessore 6 o 2 cm.

Argo is available with a transparent methacrylate Tracks base as well as in a floor-standing version. The Argo bedroom units can be ordered with a 6 or 2 cm thick top.



Argo contenitori / units
Comò laccato opaco tabasco 171.
Basamento Tracks metallo antracite / ottone.
Chest-of-drawers in matt tabasco 171 lacquer.
Tracks base in anthracite/brass metal.

Bolle specchiera / mirror

SIR



Sir contenitori / units

Comò materico canvas,
vassoio materico noce ambrata.
Comodini materico rovere carbone,
vassoio materico rovere carbone.
Settimanali materico opaco basalto,
vassoio opaco materico basalto.
Textured canvas chest-of-drawers,
textured amber walnut tray.
Textured coal oak bedside tables,
textured coal oak trays.
Textured matt basalt tall boys,
textured matt basalt trays.

In tutti gli arredi del gruppo, il design lineare viene valorizzato dal top a vassoio: un dettaglio di stile e un originale piano d'appoggio che può essere personalizzato nella finitura.

The linear design of all the furniture belonging to this model is enhanced by the tray-top: a stylish detail and an original set-down surface whose finish can be customised.



Nel settimanale, come negli altri contenitori, il top a vassoio imprime un'inconfondibile impronta stilistica. La finitura in materico rovere moka esalta la raffinatezza dell'arredo che viene trasmessa a tutto l'ambiente.

The tray-top lends an unmistakable stylistic imprint to the tall boy and, likewise, to the other units. The textured mocha oak finish enhances the refinement of these units and transmits it to the whole room.



Sir contenitore / unit
Materico rovere moka e top a vassoio materico rovere carbone.
Textured mocha oak with a textured coal oak tray-top.



Con suo top a vassoio, il comò è ricercato nel design; con il suo abbinamento di materico rovere carbone e materico piacentina chiara, è elegante nelle finiture. Un incontro perfetto di matericità e forme per una notte raffinata.

This chest-of-drawers owes the refinement of its design to its tray-top; pairing textured coal oak with textured light piacentina makes for elegant results. A perfect encounter of texture and forms for a refined night.



Sir contenitore / unit
Comò materico piacentina chiara
e top a vassoio materico rovere carbone.
Textured light piacentina
chest-of-drawers with a textured coal
oak tray-top.

ATHENA

Athena contenitore / unit

Comò materico cemento cava, inserto maniglia materico noce ambra.

Comodino laccato opaco mirto 165, inserto maniglia vetro lucido mirto 365.

Textured quarry cement chest-of-drawers with textured amber walnut handle inserts.

Matt myrtle 165 lacquered bedside table with gloss myrtle 365 handle inserts.

Comodini materico noce ambra, inserto materico alpaca.

Settimanali materico rovere moka, inserto maniglia vetro lucido mirto 365.

Textured amber walnut bedside tables with textured alpaca inserts.

Textured mocha oak tall boy with gloss myrtle 365 glass handle inserts.

L'inserto maniglia verticale disegna sui frontali del gruppo delle fasce grafiche e decorative, che possono essere personalizzate con diverse finiture o colori per creare degli arredi originali.

The vertical handle inserts on the fronts of the Athena units draw decorative, graphical lines that can be customised in various finishes or colours to create original furniture.



Athena contenitori / units
Comò materico cemento cava
e inserto maniglia materico noce ambra.
Textured quarry cement chest-of-drawers with
textured amber walnut handle inserts.

Sul comò in materico cemento cava si distinguono gli inserti in materico noce ambra: le maniglie disallineate con finiture a contrasto creano sull'arredo un gioco grafico accattivante.

Inserts in textured amber walnut stand out on the textured quarry cement chest-of-drawers: the non-aligned handles with contrasting finishes create an eye-catching play of graphic lines on the furniture.



L'inserto maniglia in materico rovere carbone dà dinamismo cromatico e geometrico al comodino in laccato opaco basalto 177 e, allo stesso tempo, riprende il ritmo visivo della testiera del letto.

The handle insert in textured coal oak lends a certain chromatic and geometric dynamism to the bedside unit in matt basalt 177 lacquer while simultaneously picking up the visual pace of the bed headboard.



Athena contenitore / unit
Comodini laccato opaco
basalto 177, inserto maniglia materico
rovere carbone.
Bedside units with a matt basalt 177 lacquered
finish. Handle insert in textured coal oak.

Skyline letto / bed

VIP



Vip contenitore / unit

Comò materico rovere sabbia,
gola laccato opaco bromo 176.

Comodini e gola laccato opaco mirto 165.

Comodino materico opaco basalto,
gola laccata opaco basalto 177.

Settimanali materico rovere carbone,
gola specchio 381.

Chest-of-drawers in textured sand oak,
matt bromine 176 lacquered grip channel.

Matt myrtle 165 lacquered bedside tables
and grip channels.

Textured matt basalt bedside table, matt
basalt 177 lacquered grip channels.

Textured coal oak tall boys, mirror 381 grip
channels.

Gli arredi del gruppo presentano una caratteristica distintiva: una gola laterale personalizzabile in diverse finiture. I frontali non si estendono in tutta lunghezza, ma lasciano uno spazio vuoto ai lati, creando così un design unico.

This set of furniture has a distinctive feature: a side grip channel that can be customised in various finishes. The fronts stop short of the side panels, leaving a empty gap on each side which creates a unique design.



Comò e gola condividono la stessa finitura materico rovere sabbia per un total look molto naturale. In questo caso il focus non è sul contrasto di colori e materiali, bensì sul design dell'arredo in sé.

The chest-of-drawers and grip channels share the same textured sand oak finish for a very natural total look. In this case the focus isn't on the contrasting colours and materials but on the design of the unit itself.



Vip contenitore / unit
Comò e gola materico
rovere sabbia.
Chest-of-drawers
and grip channel in textured
sand oak.

Bolle specchiere / mirrors
Caruso tavolino / coffee table
Kalista Midi servetto /
chair enging rack



La gola laterale può essere personalizzata anche in vetro colorato. Sul comò in materico rovere sabbia, il dettaglio della presa maniglia in vetro lucido hot 365 aggiunge un tocco di eleganza.

The side grip channel can also be customised in lacquered glass. The detail of the grip channel in gloss hot grey 365 lacquer adds a touch of elegance to the textured sand oak chest-of-drawers.



Vip contenitori / units

Comò e specchiera materico rovere sabbia, e gola in vetro lucido mirto 365 .
Chest-of-drawers and mirror in textured sand oak with grip channel in gloss myrtle 365 glass.



Vip contenitori / units
Comodini materico rovere moka.
Textured mocha oak bedside tables.

Ken letto / bed

CAPITOL



Il fianco laterale dal forte spessore accentua le linee decise del gruppo: un dettaglio che può essere personalizzato in diverse finiture per caratterizzare i contenitori e per coordinarsi ad altri arredi della camera da letto.

A very thick side panel enhances the bold lines of this model: a detail that can be customised in various finishes to distinguish these units and to coordinate them with the other furniture in the bedroom.

Capitol contenitore / unit
Comò materico rovere moka,
laccato opaco salina 163.
Comodini materico noce ambra,
laccato opaco salina 163.
Settimanale laccato opaco basalto 177.
Textured mocha oak and matt salt grey 163
lacquered chest-of-drawers.
Textured amber walnut and matt salt grey
163 lacquered bedside tables.
Matt basalt 177 lacquered tall boys.



Capitol contenitore / units
Comodino materico basalto e materico rovere moka.
Textured basalt and textured mocha oak bedside table.

Set letto / bed



Il fianco in materico rovere moka crea un contrasto insolito con il materico opaco basalto: diventa un elemento di interesse visivo che cattura l'attenzione e aggiunge un tocco di eleganza.

The side panel in textured mocha oak creates an unusual contrast with textured matt basalt, becoming a visually interesting, eye-catching trait that adds a touch of elegance to the room.



Il comò in laccato opaco hot 127 è valorizzato dal fianco in materico rovere moka: colore pieno e venature sono in perfetta armonia tra di loro e creano un contrasto molto delicato.

The matt hot grey 127 lacquered chest-of-drawers is enhanced by the mocha oak wood side panel: the solid colour and the wood grain are in perfect harmony with each other while creating a very subtle contrast.



Capitol contenitore / unit
Comò materico rovere moka
e laccato opaco hot 127.
Mocha oak textured and matt hot grey 127
lacquered chest-of-drawers.

KROSS

Tagli diagonali e presa maniglia verticale sono i tratti caratteristici di un gruppo estremamente geometrico e moderno. C'è di più: i frontali abbinano finiture e colori per enfatizzare ulteriormente il design.

Diagonal lines and vertical grip recesses are the distinguishing traits of an extremely geometric and modern set of furniture. But that's not all: the fronts combine finishes and colours to further enhance the design.



Kross contenitore / unit
Comò materico opaco arena,
vetro lucido arena 378.
Comodini materico rovere moka,
vetro arena lucido 378.
Settimanali laccati opachi rubino 172,
vetro lucido rubino 372.
Textured matt arena and gloss
arena 378 glass chest-of-drawers.
Textured mocha oak and gloss
arena 378 glass bedside units.
Matt ruby 172 and gloss ruby 372 glass
tall boys.





Sui frontali del comò e del comodini, il materico rovere sabbia è accostato al vetro lucido smoke 328 per creare un effetto ricercato. Gli abbinamenti dettano lo stile e valorizzano la notte.

To create a refined look, textured sand oak is paired with gloss smoke 328 glass on the chest-of-drawer and bedside table fronts. Perfect pairings create style and enhance the night.



Kross contenitori / units
Comò e comodini materico rovere sabbia e vetro lucido smoke 328.
Textured sand oak and gloss smoke 328 glass chest-of-drawers and bedside tables.
Charlie letto / bed

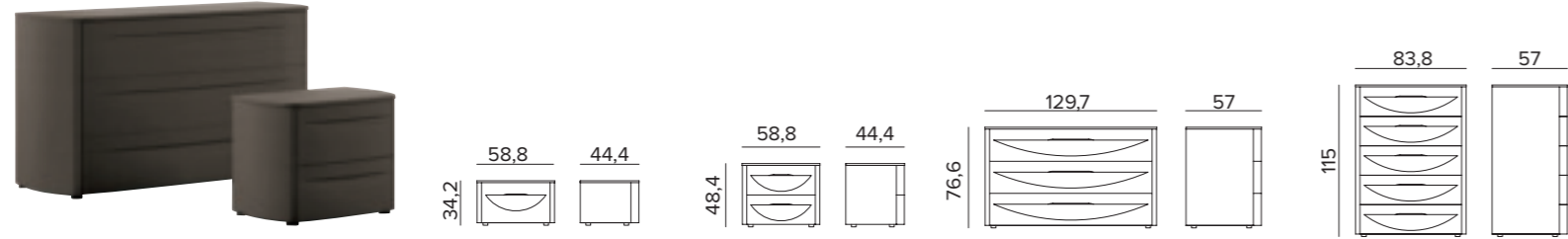
AREA TECNICA

TECHNICAL AREA

Un'ampia varietà di misure e una vasta scelta di finiture caratterizzano tutte le collezioni Tomasella. Progettare gli spazi e creare uno stile sono i passaggi fondamentali per realizzare la camera da letto dei propri sogni.

A wide range of sizes and a vast array of finishes are available for the Tomasella collections. Planning spaces and creating styles are the essential steps required to shape your dream bedroom.

MISURE / SIZES



FINITURE STRUTTURA / STRUCTURE FINISHES

LEGNO - WOOD



LGN RSB
Rovere sabbia
Sand oak

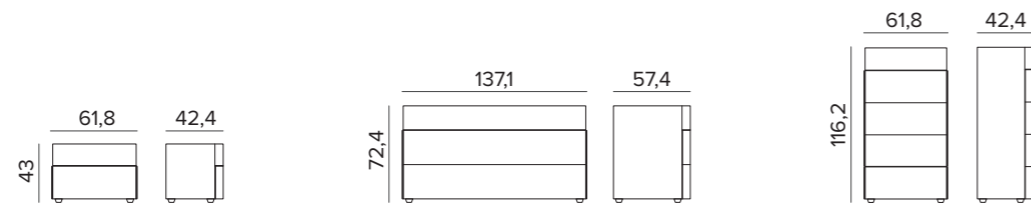


LGN RMK
Rovere moka
Mocha oak

LACCATI LEGNO PORO APERTO
OPEN-PORE WOOD LACQUERS



LGN PA
Laccati poro aperto (vedi pag. 130)
Open-pore lacquers (see page 130)



FINITURE STRUTTURA / STRUCTURE FINISHES

LEGNO - WOOD



LGN RSB
Rovere sabbia
Sand oak



LGN RMK
Rovere moka
Mocha oak

GRES DISPONIBILI SOLO PER TOP
STONEWARE AVAILABLE ONLY FOR TOPS

GRES - STONEWARE

CAT. ELEGANCE



012 Pietra Antracite 032 Fokos Terra 033 Fokos Piombo 034 Urban Marble 035 Amani

CAT. PREMIUM



042 Emperador 040 Calacatta Oro 041 Noir Desir 043 Nero Greco 070 Calatorao Silk

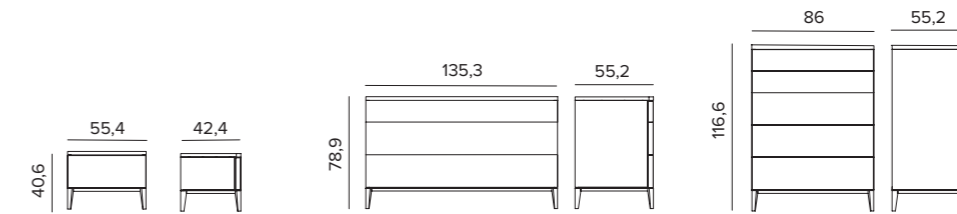


071 Abu Dhabi Silk 072 Pulpis Silk

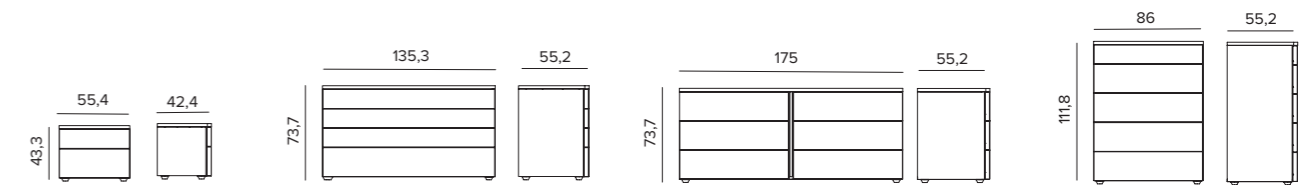
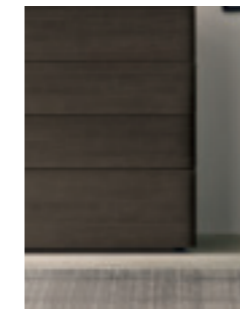


MISURE / SIZES

DOLCEVITA CON BASAMENTO / WITH BASE



DOLCEVITA SENZA BASAMENTO / WITHOUT BASE



FINITURE STRUTTURA E BASAMENTO / STRUCTURE AND BASE FINISHES

LEGNO - WOOD



LGN RSB
Rovere sabbia
Sand oak



LGN RMK
Rovere moka
Mocha oak



LGN RC
Rovere carbone
Coal oak

LACCATI PORO APERTO
OPEN-PORE LACQUERS



PA
Laccati poro aperto (vedi pag. 132)
Open-pore lacquers (see page 132)

LACCATI OPACHI O LUCIDI
MATT OR GLOSS LACQUERS

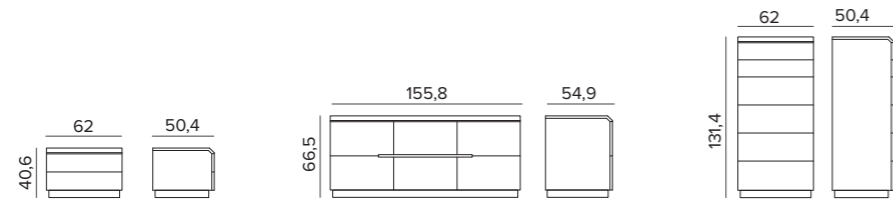


OC - LC
Colori laccati opachi o lucidi a campionario (vedi pag. 132)
Choice of matt or gloss lacquer colours from our range (see page 132)

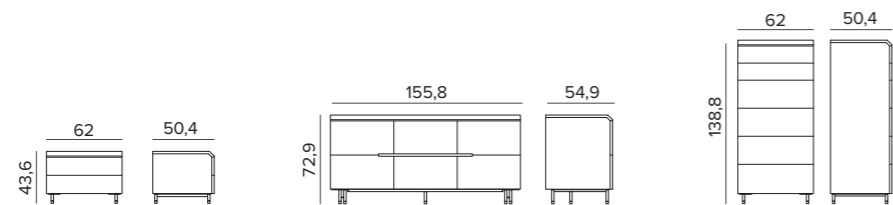
Laccato lucido non disponibile per basamento.
Glossy lacquer not available for base.



MORFEO ZOCCOLO A TERRA / WITH FLOOR-LEVEL PLINTH

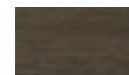


MORFEO BASAMENTO TRACKS / TRACKS BASE



FINITURE STRUTTURA / STRUCTURE FINISHES

LEGNO - WOOD



LGN RMK
Rovere moka
Mocha oak

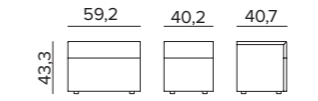


LGN RC
Rovere carbone
Coal oak

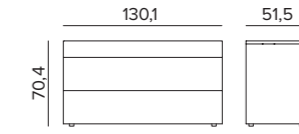
LACCATI OPACHI
MATT LACQUERS



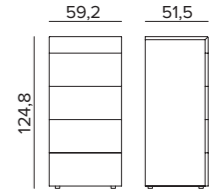
OC
Colori laccati opachi a campionario (vedi pag. 132)
Choice of matt lacquer colours from our range (see page 132)



Elemento 2 casseti P=40,7 H=43,3



Elemento 3 casseti P=51,5 H=70,4



Elemento 5 casseti P=51,5 H=124,8

FINITURE STRUTTURA / STRUCTURE FINISHES

LEGNO - WOOD



LGN RSB
Rovere sabbia
Sand oak



LGN RMK
Rovere moka
Mocha oak

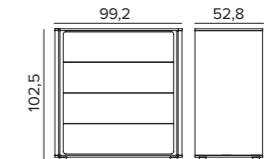
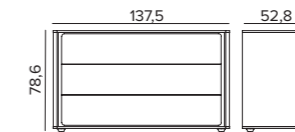
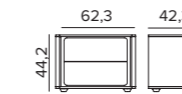
LACCATI OPACHI O LUCIDI
MATT OR GLOSS LACQUERS



OC - LC
Colori laccati opachi o lucidi a campionario (vedi pag. 132)
Choice of matt or gloss lacquer colours from our range (see page 132)

Tivoli

MISURE / SIZES



FINITURE STRUTTURA E BASAMENTO / STRUCTURE AND BASE FINISHES

LEGNO - WOOD



LGN RSB
Rovere sabbia
Sand oak



LGN RMK
Rovere moka
Mocha oak



LGN RC
Rovere carbone
Coal oak

LACCATI OPACHI
MATT LACQUERS



OC
Colori laccati opachi a campionario (vedi pag. 132)
Choice of matt lacquer colours from our range (see page 132)



FINITURE STRUTTURA, FRONTALI E TOP / STRUCTURE, FRONT AND TOP FINISHES

MT 1/ONE

MT PREMIUM MATERICO - TEXTURED

MT PREMIUM MATERICO OPACO - MATT TEXTURED

MT NAM Noce ambr Amber walnut	MT CNV Canvas	MT YUT Yuta	MT ALP Alpaca	MT OC BG Bianco gesso Chalk white	MT OC MP Madreperla Mother of pearl	MT OC ARN Arena	MT OC BA Basalto Basalt	MT OC AN Antracite Anthracite
--	-------------------------	-----------------------	-------------------------	--	--	---------------------------	--------------------------------------	--

MT PREMIUM MATERICO ESSENZA - TEXTURED WOOD

MT PREMIUM MATERICO NODATO - KNOTTED TEXTURED

MT RSB Rovere sabbia Sand oak	MT RMK Rovere moka Mocha oak	MT RC Rovere carbone Coal oak	MT RNC Nodato chiaro Light knotted	MT RNS Nodato scuro Dark knotted	MT RNN Rovere nodato naturale Natural oak knotted
--	---	--	---	---	--

MT PREMIUM MATERICO PORO APERTO OPEN - PORE TEXTURED

MT PREMIUM MATERICO CEMENTO - TEXTURED CEMENT

MT PA BG Bianco gesso Chalk white	MT PA MP Madreperla Mother of pearl	MT CC Cemento chiaro Light cement	MT CV Cemento cava Cava cement	MT CS Cemento scuro Dark cement
--	--	--	---	--

MT SPECIAL MATERICO - TEXTURED

MT INT C Intreccio chiaro Light intreccio	MT INT S Intreccio scuro Dark intreccio	MT PSC Piasentina chiara Light piasentina	MT PSS Piasentina scura Dark piasentina	MT OBR Ossido brunito Burnished oxide	MT PG Paglia Grigio Grey straw	MT PB Paglia Bronzo Bronze straw	MT MB Maya bronze
--	--	--	--	--	---	---	-----------------------------

LEGNO - WOOD

LIGNO disponibile solo per top. Wood is only available for tops.

LACCATI METALLIZZATI - METALLIC LACQUERS

LGN RSB Rovere sabbia Sand oak	LGN RMK Rovere moka Mocha oak	LGN RC Rovere carbone Coal oak	OCM 090 Bronzo Bronze	OCM 091 Ghisa Cast iron	OCM 092 Ottone Brass
---	--	---	------------------------------------	--------------------------------------	-----------------------------------

LACCATI PORO APERTO OPEN-PORE LACQUERS

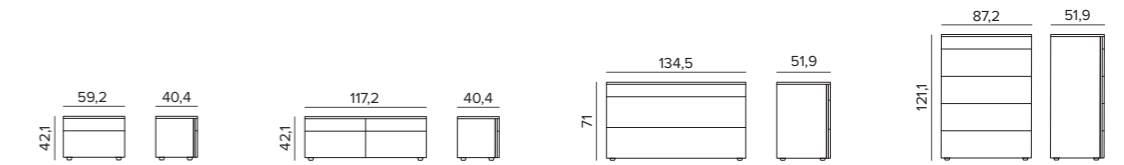
LACCATI LACQUERS

PA
Laccati poro aperto (vedi pag. 132)
Open-pore lacquers (see page 132)

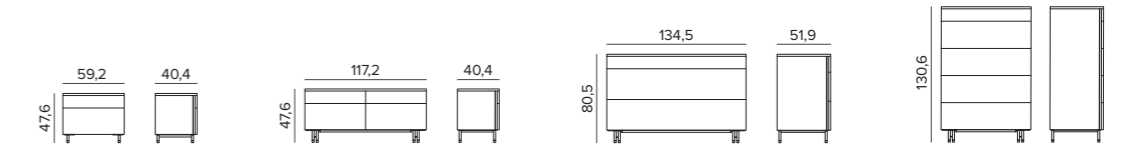
OC - LC
Colori laccati opachi e lucidi a campionario (vedi pag.132)
Choice of matt and gloss lacquer colours from our range (see page 132)



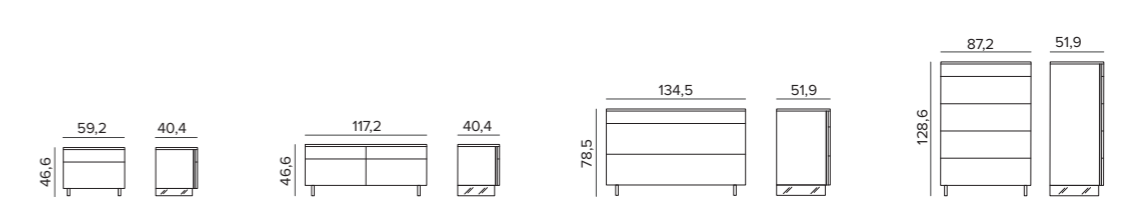
ARGO TOP SPESSORE 2 / 2 CM THICK



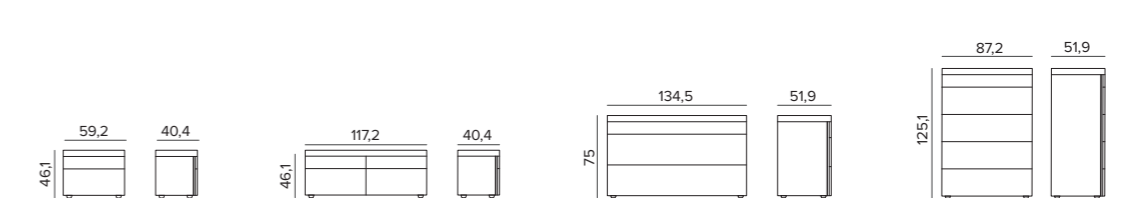
ARGO TOP SPESSORE 2 BASAMENTO TRACKS / 2 CM THICK WITH TRACKS BASE



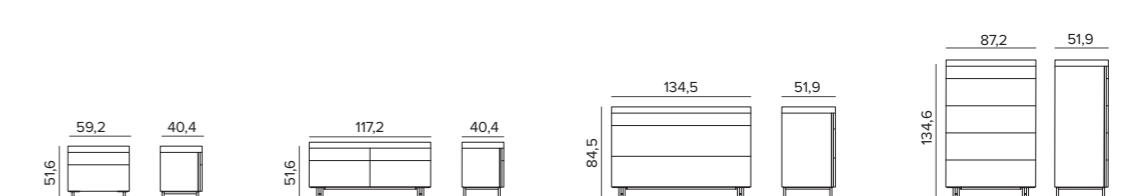
ARGO TOP SPESSORE 2 BASAMENTO METACRILATO / 2 CM THICK WITH METHACRYLATE BASE



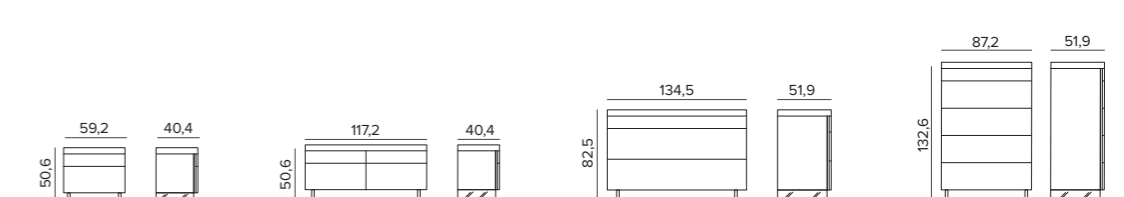
ARGO TOP SPESSORE 6 / 6 CM THICK



ARGO TOP SPESSORE 6 BASAMENTO TRACKS / 6 CM THICK WITH TRACKS BASE




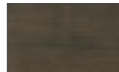






ARGO TOP SPESSORE 6 BASAMENTO METACRILATO / 6 CM THICK WITH METHACRYLATE BASE



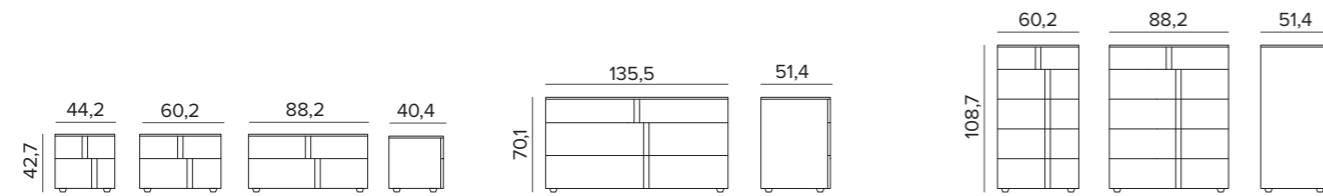


FINITURE STRUTTURA, FRONTALI E TOP / STRUCTURE, FRONT AND TOP FINISHES

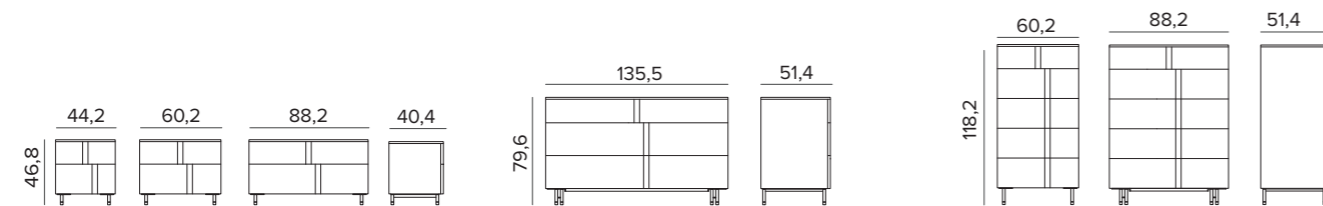
<p>MT 1/ONE</p>  <p>MT NAM Noce ambra Amber walnut</p>	<p>MT PREMIUM MATERICO PORO APERTO - OPEN PORE TEXTURED</p>  <p>MT PA BG Bianco gesso Chalk white</p>	<p>MT PREMIUM MATERICO OPACO - MATT TEXTURED</p>  <p>MT PA MP Madreperla Mother of pearl</p>	<p>MT OC BG Bianco gesso Chalk white</p>	<p>MT OC MP Madreperla Mother of pearl</p>	<p>MT PREMIUM MATERICO ESSENZA - TEXTURED WOOD</p>  <p>MT RMK Rovere moka Mocha oak</p>
<p>MT PREMIUM MATERICO CEMENTO - TEXTURED CEMENT</p>  <p>MT CV Cemento cava Cava cement</p>	<p>MT PREMIUM MATERICO NODATO - KNOTTED TEXTURED</p>  <p>MT RNC Nodato chiaro Light knotted</p>	<p>LACCATI PORO APERTO OPEN-PORE LACQUERS</p>  <p>PA Laccati poro aperto (vedi pag. 130) Open-pore lacquers (see page 130)</p>	<p>LACCATI OPACHI MATT LACQUERS</p>  <p>OC Colori laccati opachi a campionario (vedi pag. 130) Choice of matt lacquer colours from our range (see page 130)</p>		



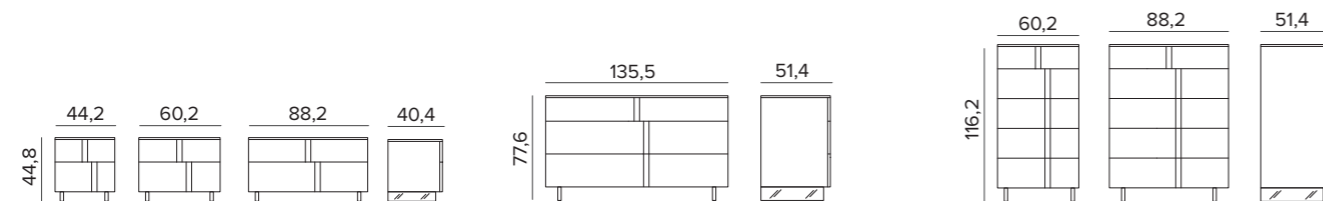
ATHENA




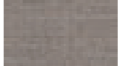





ATHENA BASAMENTO TRACKS / TRACKS BASE



ATHENA BASAMENTO METACRILATO / METHACRYLATE BASE



FINITURE INSERTO GOLA / GROOVE INSERT FINISHES

<p>MT 1/ONE</p>  <p>MT NAM Noce ambra Amber walnut</p>	<p>MT CNV Canvas</p>	<p>MT YUT Yuta</p>	<p>MT PREMIUM MATERICO - TEXTURED</p>  <p>MT ALP Alpaca</p>	<p>MT OC BG Bianco gesso Chalk white</p>	<p>MT OC MP Madreperla Mother of pearl</p>	<p>MT OC ARN Arena</p>	<p>MT OC BA Basalto Basalt</p>	<p>MT OC AN Antracite Anthracite</p>
<p>MT PREMIUM MATERICO ESSENZA - TEXTURED WOOD</p>  <p>MT RSB Rovere sabbia Sand oak</p>	<p>MT RMK Rovere moka Mocha oak</p>	<p>MT RC Rovere carbone Coal oak</p>	<p>MT PREMIUM MATERICO NODATO - KNOTTED TEXTURED</p>  <p>MT RNC Nodato chiaro Light knotted</p>	<p>MT RNS Nodato scuro Dark knotted</p>	<p>MT RNN Rovere nodato naturale Natural oak knotted</p>			
<p>MT PREMIUM MATERICO PORO APERTO - OPEN PORE TEXTURED</p>  <p>MT PA BG Bianco gesso Chalk white</p>	<p>MT PA MP Madreperla Mother of pearl</p>	<p>MT PREMIUM MATERICO CEMENTO - TEXTURED CEMENT</p>  <p>MT CC Cemento chiaro Light cement</p>	<p>MT CV Cemento cava Cava cement</p>	<p>MT CS Cemento scuro Dark cement</p>				
<p>MT SPECIAL MATERICO - TEXTURED</p>  <p>MT INT C Intreccio chiaro Light intreccio</p>	<p>MT INT S Intreccio scuro Dark Intreccio</p>	<p>MT PSC Piasentina chiara Light piasentina</p>	<p>MT PSS Piasentina scura Dark piasentina</p>	<p>MT OBR Ossido brunito Burnished oxide</p>	<p>MT PG Paglia Grigio Grey straw</p>	<p>MT PB Paglia Bronzo Bronze straw</p>	<p>MT MB Maya bronze</p>	

LACCATI PORO APERTO OPEN-PORE LACQUERS



PA
Laccati poro aperto (vedi pag. 132)
Open-pore lacquers (see page 132)

LACCATI OPACHI MATT LACQUERS



OC
Colori laccati opachi a campionario (vedi pag. 132)
Choice of matt lacquer colours from our range (see page 132)

VETRO - GLASS



Vetro lucido a campionario (vedi pag. 132)
Choice of gloss glass from our range (see page 132)

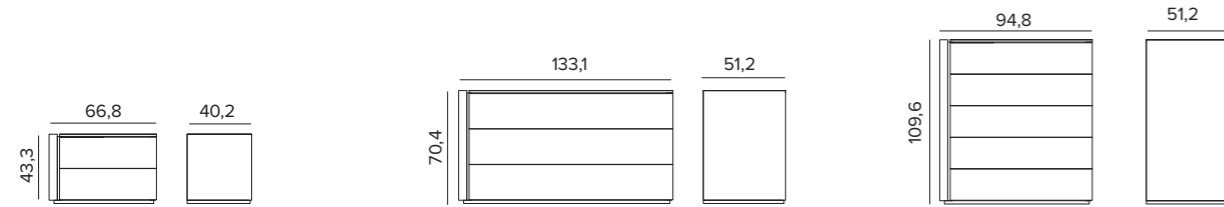
SPECCHIO - MIRRORS



383
Specchio grigio



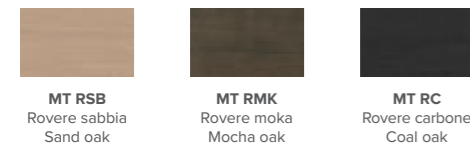
MISURE / SIZES



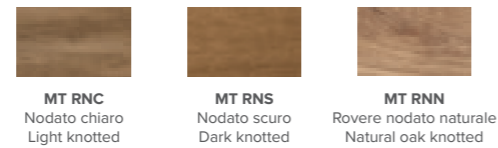
FINITURE PER STRUTTURA, FRONTALI, ZOCCOLO E FIANCO INTERNO / CARCASS, FRONT, PLINTH AND INTERIOR SIDE FINISHES



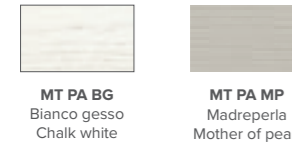
MT PREMIUM MATERICO ESSENZA - TEXTURED WOOD



MT PREMIUM MATERICO NODATO - KNOTTED TEXTURED



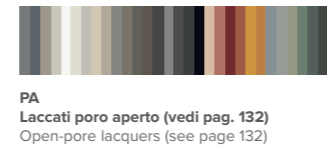
MT PREMIUM MATERICO PORO APERTO OPEN - PORE TEXTURED



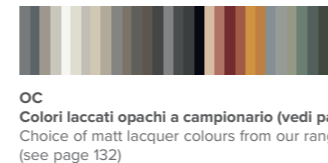
MT PREMIUM MATERICO CEMENTO - TEXTURED CEMENT



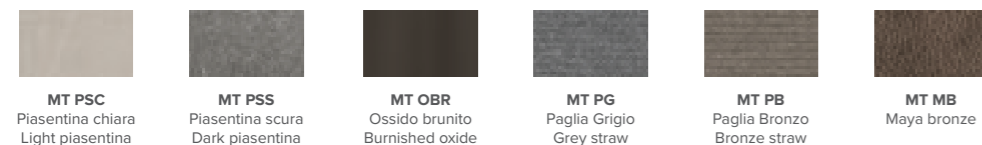
LACCATI PORO APERTO OPEN-PORE LACQUERS



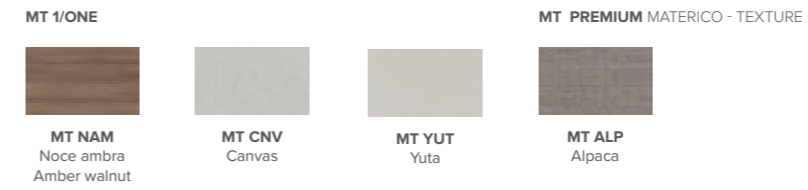
LACCATI OPACHI MATT LACQUERS



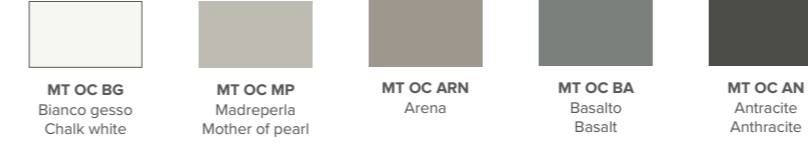
MT SPECIAL MATERICO - TEXTURED



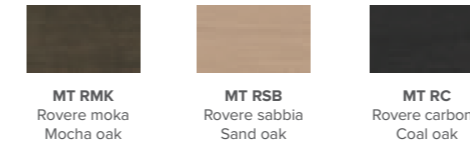
FINITURE FIANCO ESTERNO SP.50 / 50-MM THICK END PANEL FINISHES



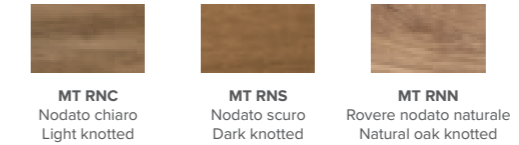
MT PREMIUM MATERICO OPACO - MATT TEXTURED



MT PREMIUM MATERICO ESSENZA - TEXTURED WOOD



MT PREMIUM MATERICO NODATO - KNOTTED TEXTURED



MT PREMIUM MATERICO CEMENTO - TEXTURED CEMENT



LACCATI OPACHI MATT LACQUERS

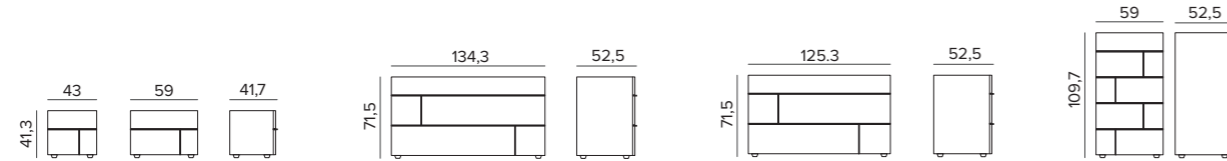




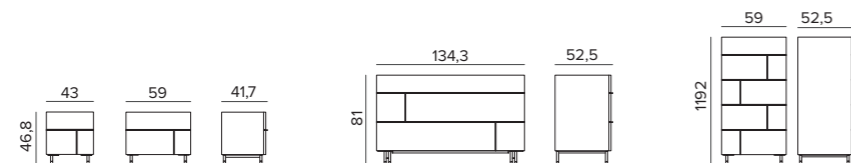
MISURE / SIZES



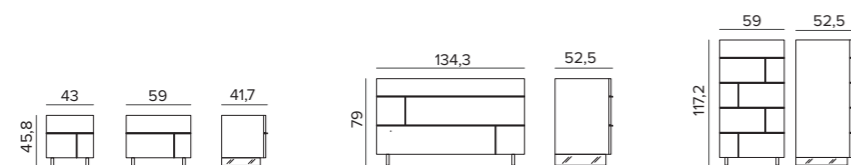
HASHTAG



HASHTAG BASAMENTO TRACKS / TRACKS BASE



HASHTAG BASAMENTO METACRILATO / METHACRYLATE BASE

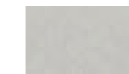


FINITURE STRUTTURA,FRONTALI E TOP / STRUCTURE, FRONT AND TOP FINISHES

MT 1/ONE



MT NAM
Noce ambr
Amber walnut

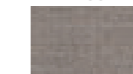


MT CNV
Canvas



MT YUT
Yuta

MT PREMIUM MATERICO - TEXTURED



MT ALP
Alpaca

MT PREMIUM MATERICO OPACO - MATT TEXTURED



MT OC BG
Bianco gesso
Chalk white



MT OC MP
Madreperla
Mother of pearl



MT OC ARN
Arena



MT OC BA
Basalto
Basalt

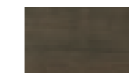


MT OC AN
Antracite
Anthracite

MT PREMIUM MATERICO ESSENZA - TEXTURED WOOD



MT RSB
Rovere sabbia
Sand oak



MT RMK
Rovere moka
Mocha oak



MT RC
Rovere carbone
Coal oak

MT PREMIUM MATERICO NODATO - KNOTTED TEXTURED



MT RNC
Nodato chiaro
Light knotted



MT RNS
Nodato scuro
Dark knotted



MT RNN
Rovere nodato naturale
Natural oak knotted

MT PREMIUM MATERICO PORO APERTO OPEN - PORE TEXTURED



MT PA BG
Bianco gesso
Chalk white



MT PA MP
Madreperla
Mother of pearl

MT PREMIUM MATERICO CEMENTO - TEXTURED CEMENT



MT CC
Cemento chiaro
Light cement



MT CV
Cemento cava
Cava cement



MT CS
Cemento scuro
Dark cement

MT SPECIAL MATERICO - TEXTURED



MT INT C
Intreccio chiaro
Light intreccio



MT INT S
Intreccio scuro
Dark intreccio



MT PSC
Piasentina chiara
Light piasentina



MT PSS
Piasentina scura
Dark piasentina



MT OBR
Ossido brunito
Burnished oxide



MT PG
Paglia Grigio
Grey straw



MT PB
Paglia Bronzo
Bronze straw



MT MB
Maya bronze

LACCATI PORO APERTO

OPEN-PORE LACQUERS



PA
Laccati poro aperto (vedi pag. 132)
Open-pore lacquers (see page 130)

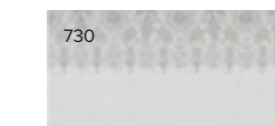
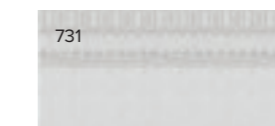
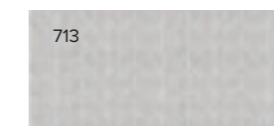
LACCATI OPACHI

MATT LACQUERS



OC
Colori laccati opachi e lucidi a campionario (vedi pag. 132)
Choice of matt and gloss lacquer colours from our range (see page 130)

FINITURE GRAPHIC PER FRONTALI / GRAPHIC FINISHES FOR FRONTS



VETRO - GLASS



Vetro lucido e satinato colorato a campionario (vedi pagina 132)
Choice of gloss or satin coloured glass from our range (see page 132)

Top disponibili anche in finitura vetro.
Top also available in glass finish.

FINITURE PER MANIGLIA / HANDLE FINISHES

LACCATI OPACHI

MATT LACQUERS



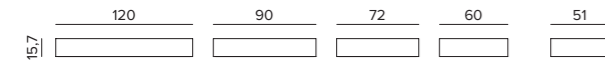
OC
Colori laccati opachi a campionario (vedi pag.132)
Choice of matt lacquer colours from our range (see page 132)



REPLAY CON ZOCCOLO A TERRA O SOSPESI / WITH FLOOR-LEVEL PLINTH OR WALL-HUNG



Elemento 1 cassetto P=51 H=18,7



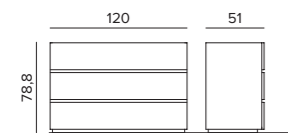
Elemento 1 cassetto sospeso P=51 H=15,7



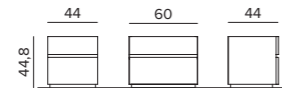
Elemento 1 cassetto P=51 H=26,6



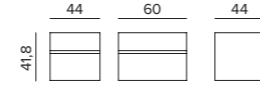
Elemento 1 cassetto sospeso P=51 H=23,6



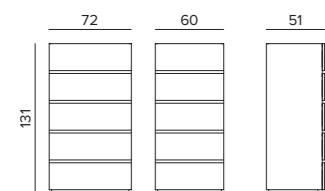
Elemento 3 cassetto P=51 H=78,8



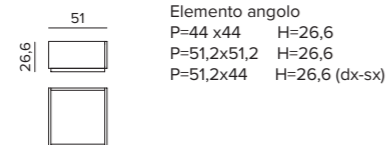
Elemento 2 cassette P=44 H=44,8



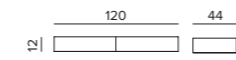
Elemento 2 cassette sospeso P=44 H=41,8



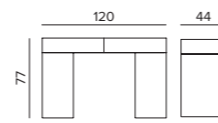
Elemento 3 cassetto P=51 H=131



Elemento angolo
P=44 x44 H=26,6
P=51,2x51,2 H=26,6
P=51,2x44 H=26,6 (dx-sx)



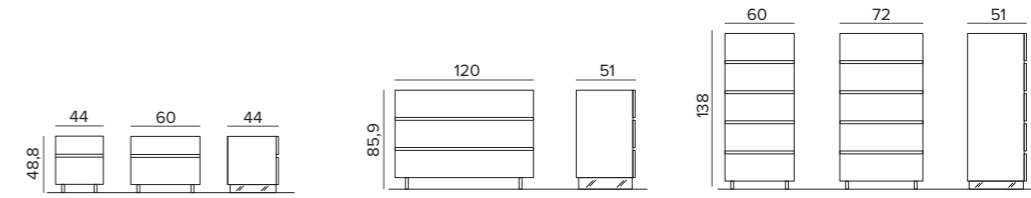
Toilette sospesa P=44 H=12



Toilette a terra P=44 H=77



REPLAY BASAMENTO METACRILATO / METHACRYLATE BASE



FINITURE STRUTTURA, FRONTALI E TOP / STRUCTURE, FRONT AND TOP FINISHES

MT 1/ONE



MT NAM
Noce ambra
Amber walnut

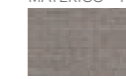


MT CNV
Canvas



MT YUT
Yuta

MT PREMIUM
MATERICO - TEXTURED



MT ALP
Alpaca

MT PREMIUM MATERICO OPACO - MATT TEXTURED



MT OC BG
Bianco gesso
Chalk white



MT OC MP
Madreperla
Mother of pearl



MT OC ARN
Arena



MT OC BA
Basalto
Basalt

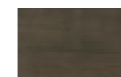


MT OC AN
Antracite
Anthracite

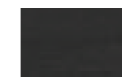
MT PREMIUM MATERICO ESSENZA - TEXTURED WOOD



MT RSB
Rovere sabbia
Sand oak



MT RMK
Rovere moka
Mocha oak



MT RC
Rovere carbone
Coal oak

MT PREMIUM MATERICO NODATO - KNOTTED TEXTURED



MT RNC
Nodato chiaro
Light knotted



MT RNS
Nodato scuro
Dark knotted



MT RNN
Rovere nodato naturale
Natural oak knotted

MT PREMIUM MATERICO
PORO APERTO OPEN - PORE TEXTURED



MT PA BG
Bianco gesso
Chalk white



MT PA MP
Madreperla
Mother of pearl

MT PREMIUM MATERICO CEMENTO - TEXTURED CEMENT



MT CC
Cemento chiaro
Light cement



MT CV
Cemento cava
Cava cement



MT CS
Cemento scuro
Dark cement

LACCATI PORO APERTO
OPEN-PORE LACQUERS



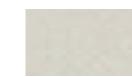
PA
Laccati poro aperto (vedi pag. 132)
Open-pore lacquers (see page 132)

LACCATI OPACHI
MATT LACQUERS

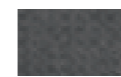


OC
Colori laccati opachi a campionario (vedi pag. 132)
Choice of matt lacquer colours from our range
(see page 132)

MT SPECIAL MATERICO - TEXTURED



MT INT C
Intreccio chiaro
Light intreccio



MT INT S
Intreccio scuro
Dark intreccio



MT PSC
Piasentina chiara
Light piasentina



MT PSS
Piasentina scura
Dark piasentina



MT OBR
Ossido brunito
Burnished oxide



MT PG
Paglia Grigio
Grey straw



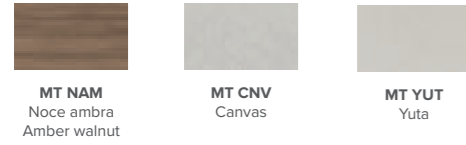
MT PB
Paglia Bronzo
Bronze straw



MT MB
Maya bronze

FINITURE TOP / TOP FINISHES

MT 1/ONE



MT NAM
Noce ambra
Amber walnut

MT CNV
Canvas

MT YUT
Yuta

MT PREMIUM MATERICO - TEXTURED



MT ALP
Alpaca

MT PREMIUM MATERICO OPACO - MATT TEXTURED



MT OC BG
Bianco gesso
Chalk white

MT OC MP
Madreperla
Mother of pearl

MT OC ARN
Arena

MT OC BA
Basalto
Basalt

MT OC AN
Antracite
Anthracite

MT PREMIUM MATERICO ESSENZA - TEXTURED WOOD



MT RSB
Rovere sabbia
Sand oak

MT RMK
Rovere moka
Mocha oak

MT RC
Rovere carbone
Coal oak

MT PREMIUM MATERICO NODATO - KNOTTED TEXTURED



MT RNC
Nodato chiaro
Light knotted

MT RNS
Nodato scuro
Dark knotted

MT PREMIUM MATERICO PORO APERTO OPEN - PORE TEXTURED



MT PA BG
Bianco gesso
Chalk white

MT PA MP
Madreperla
Mother of pearl

MT PREMIUM MATERICO CEMENTO - TEXTURED CEMENT



MT CC
Cemento chiaro
Light cement

MT CV
Cemento cava
Cava cement

MT CS
Cemento scuro
Dark cement

LACCATI PORO APERTO OPEN-PORE LACQUERS



PA
Laccati poro aperto (vedi pag. 132)
Open-pore lacquers (see page 132)

LACCATI OPACHI MATT LACQUERS



OC
Colori laccati opachi a campionario (vedi pag. 132)
Choice of matt lacquer colours from our range (see page 132)

MT SPECIAL MATERICO - TEXTURED



MT INT C
Intreccio chiaro
Light intreccio

MT INT S
Intreccio scuro
Dark Intreccio

MT PSC
Piasentina chiara
Light piasentina

MT PSS
Piasentina scura
Dark piasentina

MT GR
Graniglia
Gravel grey

MT PG
Paglia Grigio
Grey straw

MT PB
Paglia Bronzo
Bronze straw

MT MB
Maya bronze

GRES - STONEWARE

ELEGANCE



012
Pietra Antracite

032
Fokos Terra

033
Fokos Piombo

034
Urban Marble

035
Amani

PREMIUM



040
Calacatta Oro

041
Noir Desir

042
Emperador

043
Nero Greco

070
Calatorao Silk

071
Abu Dhabi Silk

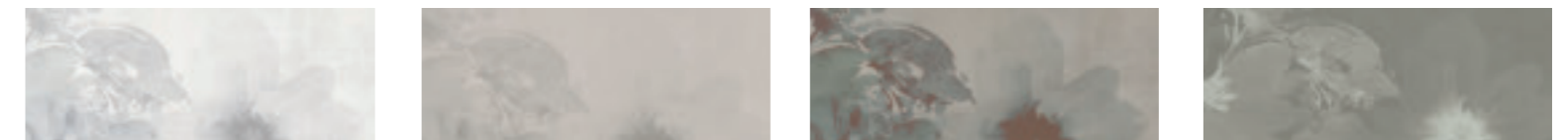
072
Pulpis Silk

VETRO - GLASS



Vetro lucido a campionario (vedi pagina 132)
Choice of gloss glass from our range (see page 132)

VETRO GRAPHIC PER TOP / GRAPHIC GLASS FOR TOPS

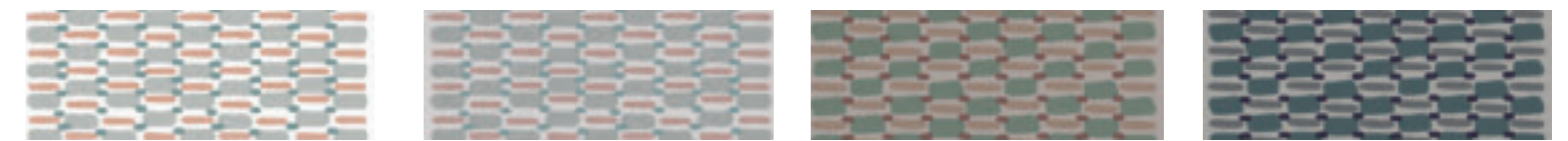


Flower 01

Flower 02

Flower 03

Flower 04



Geometric 01

Geometric 02

Geometric 03

Geometric 04



Japan 01

Japan 02

Japan 03

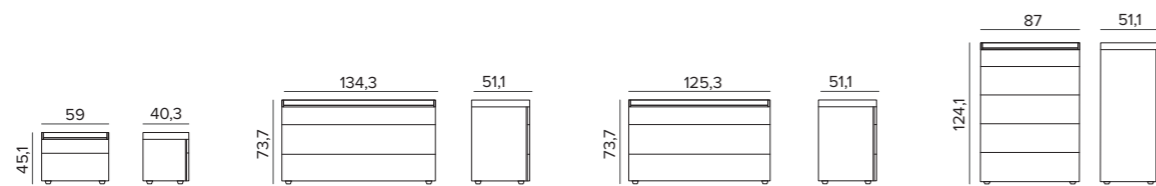
Japan 04



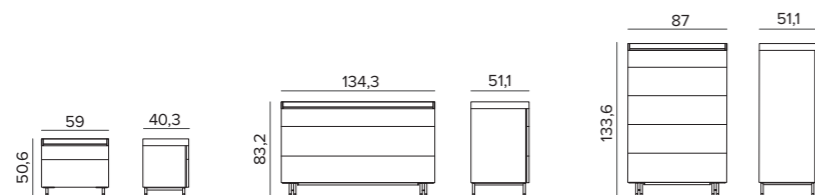
MISURE / SIZES



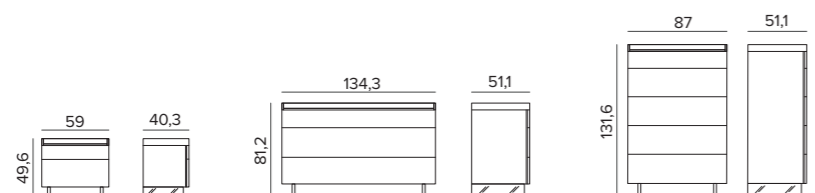
SIR



SIR BASAMENTO TRACKS / TRACKS BASE



SIR BASAMENTO METACRILATO / METHACRYLATE BASE



FINITURE STRUTTURA, FRONTALI E TOP SIR / STRUCTURE, FRONT AND SIR TOP FINISHES

MT 1/ONE



MT NAM
Noce ambra
Amber walnut



MT CNV
Canvas



MT YUT
Yuta



MT ALP
Alpaca

MT PREMIUM MATERICO - TEXTURED

MT PREMIUM MATERICO OPACO - MATT TEXTURED



MT OC BG
Bianco gesso
Chalk white



MT OC MP
Madreperla
Mother of pearl



MT OC ARN
Arena



MT OC BA
Basalto
Basalt

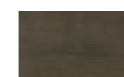


MT OC AN
Antracite
Anthracite

MT PREMIUM MATERICO ESSENZA - TEXTURED WOOD



MT RSB
Rovere sabbia
Sand oak



MT RMK
Rovere moka
Mocha oak



MT RC
Rovere carbone
Coal oak

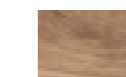
MT PREMIUM MATERICO NODATO - KNOTTED TEXTURED



MT RNC
Nodato chiaro
Light knotted



MT RNS
Nodato scuro
Dark knotted



MT RNN
Rovere nodato naturale
Natural oak knotted

MT PREMIUM MATERICO PORO APERTO OPEN - PORE TEXTURED



MT PA BG
Bianco gesso
Chalk white



MT PA MP
Madreperla
Mother of pearl

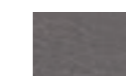
MT PREMIUM MATERICO CEMENTO - TEXTURED CEMENT



MT CC
Cemento chiaro
Light cement



MT CV
Cemento cava
Cava cement



MT CS
Cemento scuro
Dark cement

MT SPECIAL MATERICO - TEXTURED



MT INT C
Intreccio chiaro
Light intreccio



MT INT S
Intreccio scuro
Dark intreccio



MT PSC
Piasentina chiara
Light piasentina



MT PSS
Piasentina scura
Dark piasentina



MT OBR
Ossido brunito
Burnished oxide



MT PG
Paglia Grigio
Grey straw



MT PB
Paglia Bronzo
Bronze straw



MT MB
Maya bronzo

Intreccio chiaro e scuro non disponibili per Top Sir.
Dark and light intreccio finishes are not available for the Sir top.

LEGNO - WOOD



LGN RSB
Rovere sabbia
Sand oak



LGN RMK
Rovere moka
Mocha oak



LGN RC
Rovere carbone
Coal oak

I legni sono disponibili solo per il top Sir.
Wood finishes are only available for the Sir top.

LACCATI PORO APERTO

OPEN-PORE LACQUERS



PA
Laccati poro aperto (vedi pag. 132)
Open-pore lacquers (see page 132)

LACCATI OPACHI

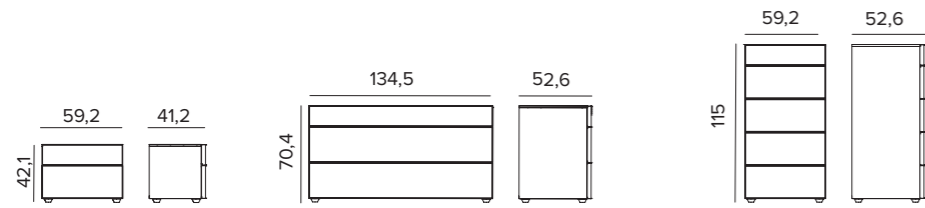
MATT LACQUERS



OC
Colori laccati opachi a campionario (vedi pag.132)
Choice of matt and gloss lacquer colours from our range (see page 132)

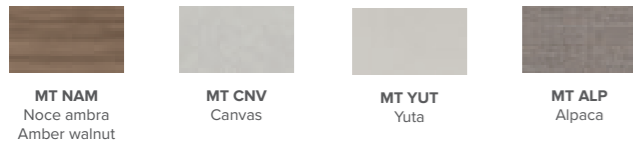


MISURE / SIZES

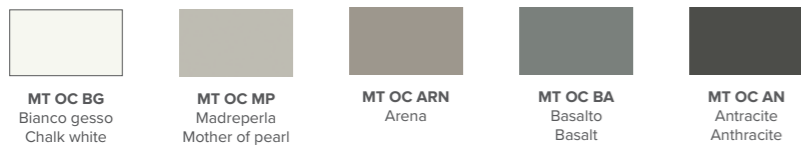


FINITURE STRUTTURA, FRONTALI E TOP / STRUCTURE, FRONT AND TOP FINISHES

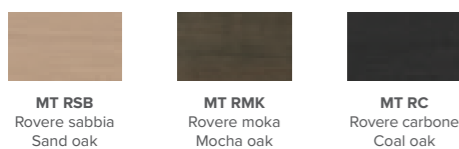
MT 1/ONE MT PREMIUM MATERICO - TEXTURED



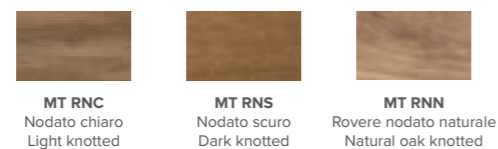
MT PREMIUM MATERICO OPACO - MATT TEXTURED



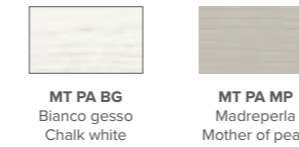
MT PREMIUM MATERICO ESSENZA - TEXTURED WOOD



MT PREMIUM MATERICO NODATO - KNOTTED TEXTURED



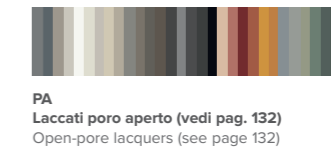
MT PREMIUM MATERICO PORO APERTO OPEN - PORE TEXTURED



MT PREMIUM MATERICO CEMENTO - TEXTURED CEMENT



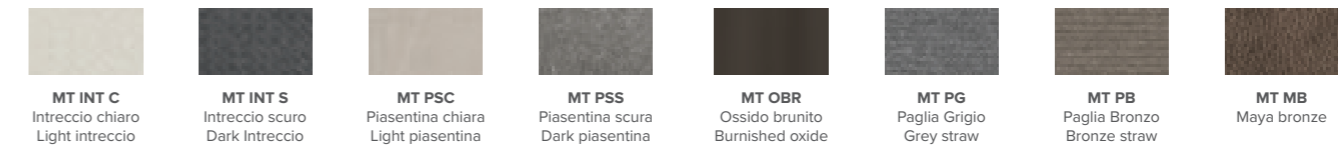
LACCATI PORO APERTO LACQUERS OPEN PORE



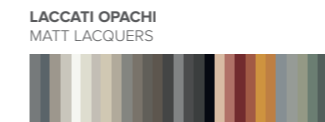
LACCATI OPACHI MATT LACQUERS



MT SPECIAL MATERICO - TEXTURED



FINITURE TELAIO FRAME FINISHES



OC Colori laccati opachi a campionario (vedi pag. 132)
Choice of matt lacquer colours from our range (see page 132)

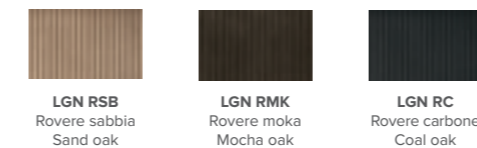
FINITURA OPTIONAL OPTIONAL FINISHES

SPECCHIO - MIRROR



FINITURE DISPONIBILI SOLO PER PRIMO CASSETTO FINISHES AVAILABLE ONLY FOR THE FIRST DRAWER

LEGNO - WOOD

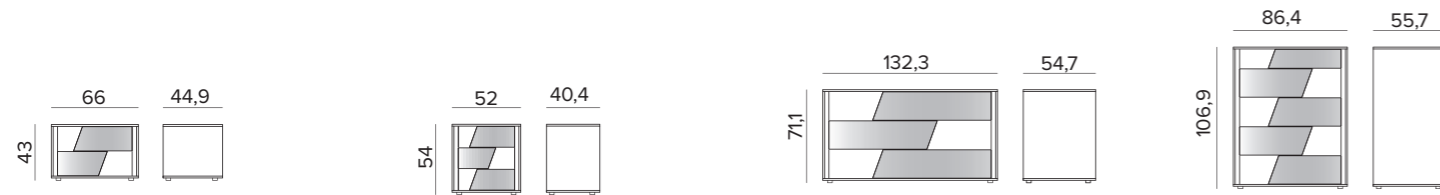


LACCATI CANETTÈ REEDED LACQUERS





MISURE / SIZES



FINITURE PER STRUTTURA, FRONTALI, ZOCCOLO E FIANCO INTERNO / CARCASS, FRONT, PLINTH AND INTERIOR SIDE FINISHES

MT 1/ONE MT NAM Noce ambra Amber walnut MT CNV Canvas MT YUT Yuta			MT PREMIUM MATERICO - TEXTURED MT ALP Alpaca MT OC BG Bianco gesso Chalk white MT OC MP Madreperla Mother of pearl MT OC ARN Arena MT OC BA Basalto Basalt MT OC AN Antracite Anthracite					
MT PREMIUM MATERICO ESSENZA - TEXTURED WOOD MT RSB Rovere sabbia Sand oak MT RMK Rovere moka Mocha oak MT RC Rovere carbone Coal oak			MT PREMIUM MATERICO NODATO - KNOTTED TEXTURED MT RNC Nodato chiaro Light knotted MT RNS Nodato scuro Dark knotted MT RNN Rovere nodato naturale Natural oak knotted			LACCATI METALLIZZATI METALLIC LACQUERS OCM 090 Bronzo Bronze OCM 091 Ghisa Cast iron OCM 092 Ottone Brass		
MT PREMIUM MATERICO PORO APERTO OPEN - PORE TEXTURED MT PA BG Bianco gesso Chalk white MT PA MP Madreperla Mother of pearl		MT PREMIUM MATERICO CEMENTO - TEXTURED CEMENT MT CC Cemento chiaro Light cement MT CV Cemento cava Cava cement MT CS Cemento scuro Dark cement		LACCATI PORO APERTO OPEN-PORE LACQUERS PA Laccati poro aperto (vedi pag. 132) Open-pore lacquers (see page 132)		LACCATI OPACHI O LUCIDI MATT OR GLOSS LACQUERS OC - LC Colori laccati opachi o lucidi a campionario (vedi pag. 132) Choice of matt or gloss lacquer colours from our range (see page 132)		

MT SPECIAL MATERICO - TEXTURED

MT INT C Intreccio chiaro Light intreccio	MT INT S Intreccio scuro Dark Intreccio	MT PSC Piasentina chiara Light piasentina	MT PSS Piasentina scura Dark piasentina	MT OBR Ossido brunito Burnished oxide	MT PG Paglia Grigio Grey straw	MT PB Paglia Bronzo Bronze straw	MT MB Maya bronze
--	--	--	--	--	---------------------------------------	---	--------------------------

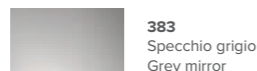
OPTIONAL FINITURE GOLA E FRONTALE CASSETTO GRIP RECESS AND FRONTAL DRAWER OPTIONAL FINISHES

VETRO - GLASS



Vetro lucido a campionario (vedi pagina 132)
Choice of gloss glass from our range (see page 132)

SPECCHIO - MIRROR

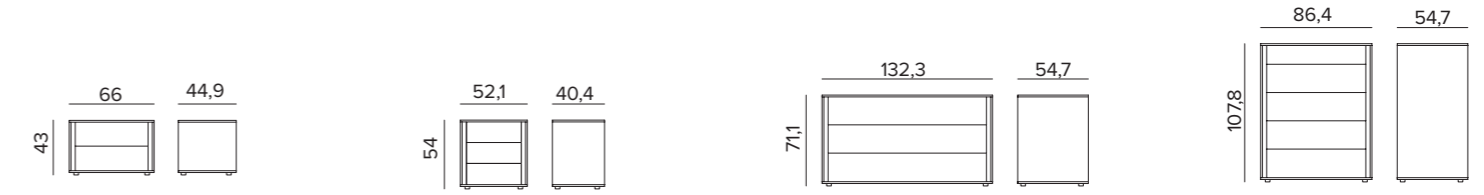


383
Specchio grigio
Grey mirror

OPTIONAL FINITURA GOLA GRIP RECESS



MISURE / SIZES



FINITURE PER STRUTTURA, FRONTALI, ZOCCOLO E FIANCO INTERNO / CARCASS, FRONT, PLINTH AND INTERIOR SIDE FINISHES

MT 1/ONE MT NAM Noce ambra Amber walnut MT CNV Canvas MT YUT Yuta			MT PREMIUM MATERICO - TEXTURED MT ALP Alpaca MT OC BG Bianco gesso Chalk white MT OC MP Madreperla Mother of pearl MT OC ARN Arena MT OC BA Basalto Basalt MT OC AN Antracite Anthracite					
MT PREMIUM MATERICO ESSENZA - TEXTURED WOOD MT RSB Rovere sabbia Sand oak MT RMK Rovere moka Mocha oak MT RC Rovere carbone Coal oak			MT PREMIUM MATERICO NODATO - KNOTTED TEXTURED MT RNC Nodato chiaro Light knotted MT RNS Nodato scuro Dark knotted MT RNN Rovere nodato naturale Natural oak knotted			LACCATI METALLIZZATI METALLIC LACQUERS OCM 090 Bronzo Bronze OCM 091 Ghisa Cast iron OCM 092 Ottone Brass		
MT PREMIUM MATERICO PORO APERTO OPEN - PORE TEXTURED MT PA BG Bianco gesso Chalk white MT PA MP Madreperla Mother of pearl		MT PREMIUM MATERICO CEMENTO - TEXTURED CEMENT MT CC Cemento chiaro Light cement MT CV Cemento cava Cava cement MT CS Cemento scuro Dark cement		LACCATI PORO APERTO OPEN-PORE LACQUERS PA Laccati poro aperto (vedi pag. 132) Open-pore lacquers (see page 132)		LACCATI OPACHI MATT LACQUERS OC Colori laccati opachi a campionario (vedi pag. 132) Choice of matt lacquer colours from our range (see page 132)		

MT SPECIAL MATERICO - TEXTURED

MT INT C Intreccio chiaro Light intreccio	MT INT S Intreccio scuro Dark Intreccio	MT PSC Piasentina chiara Light piasentina	MT PSS Piasentina scura Dark piasentina	MT OBR Ossido brunito Burnished oxide	MT PG Paglia Grigio Grey straw	MT PB Paglia Bronzo Bronze straw	MT MB Maya bronze
--	--	--	--	--	---------------------------------------	---	--------------------------

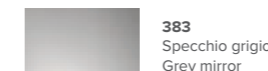
OPTIONAL FINITURA GOLA GRIP RECESS

VETRO - GLASS



Vetro lucido a campionario (vedi pagina 132)
Choice of gloss glass from our range (see page 132)

SPECCHIO - MIRROR



383
Specchio grigio
Grey mirror

FINITURE & COLORI

FINISHES & COLOURS

Un'ampia gamma di materiali e colori
permette infinite possibilità di personalizzazione.
Ogni arredo, complemento e accessorio può essere
declinato in diverse finiture per adattarsi
allo stile degli ambienti e ai gusti di chi
li vive quotidianamente.

A wide choice of materials and colours
makes for infinite customisation possibilities.
Each piece of furniture and accessory
can be supplied with different
finishes to better suit the style of rooms and the
taste of those who live in them daily.

LEGNO

WOOD



LGN RSB
Rovere sabbia
Sand oak



LGN RMK
Rovere moka
Mocha oak



LGN RC
Rovere Carbone
Coal oak



LGN CRSB
Rovere sabbia canettè
Reeded sand oak



LGN CRMK
Rovere moka canettè
Reeded mocha oak

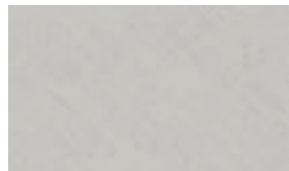


LGN CRC
Rovere carbone canettè
Reeded coal oak

MT 1/ONE



MT NAM
Noce ambra
Amber walnut



MT CNV
Canvas



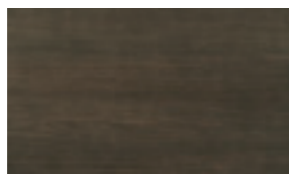
MT YUT
Yuta

MT PREMIUM

MATERICO ESSENZA
TEXTURED WOOD



MT RSB
Rovere sabbia
Sand oak



MT RMK
Rovere moka
Mocha oak



MT RC
Rovere Carbone
Coal oak

MT PREMIUM

MATERICO NODATO
KNOTTED TEXTURED



MT RNC
Nodato chiaro
Light knotted



MT RNS
Nodato scuro
Dark knotted



MT RNN
Rovere nodato naturale
Natural knotted oak

MT PREMIUM

MATERICO
TEXTURED



MT ALP
Alpaca

MT PREMIUM

MATERICO OPACO
MATT TEXTURED



MT OC BG
Bianco Gesso
Chalk White



MT OC MP
Madreperla
Mother of pearl



MT OC ARN
Arena



MT OC BA
Basalto
Basalt



MT OC AN
Antracite
Anthracite

MT PREMIUM

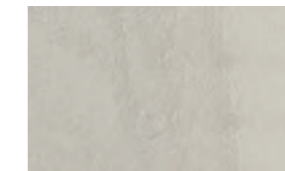
MATERICO PORO APERTO
OPEN PORE TEXTURED



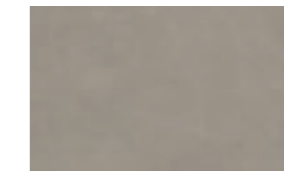
MT PA BG
Bianco gesso
Chalk white



MT PA MP
Madreperla
Mother of pearl



MT CC
Cemento chiaro
Light cement



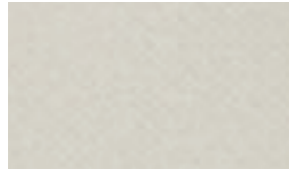
MT CV
Cemento cava
Cava Cement



MT CS
Cemento scuro
Dark cement

MT SPECIAL

MATERICO
TEXTURED



MT INT C
Intreccio chiaro
Light intreccio



MT INT S
Intreccio scuro
Dark Intreccio



MT PSC
Piasentina chiara
Light Piasentina



MT PSS
Piasentina scura
Dark Piasentina



MT OBR
Ossido brunito
Burnished oxide



MT PG
Paglia Grigio
Grey straw



MT PB
Paglia Bronzo
Bronze straw



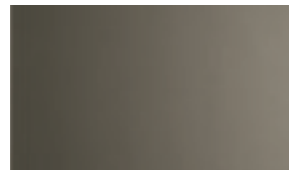
MT MB
Maya bronze
Bronze straw

LACCATI METALLIZZATI

METALLIC LACQUERS



OCM 090
Bronzo
Bronze



OCM 091
Ghisa
Cast iron



OCM 092
Ottone
Brass

GRES PER TOP REPLAY E BRANDO

STONEWARE FOR REPLAY AND BRANDO TOPS

CAT. ELEGANCE



012
Pietra Antracite



032
Fokos Terra



033
Fokos Piombo



034
Urban Marble

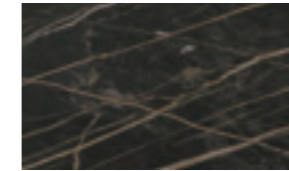


035
Amani

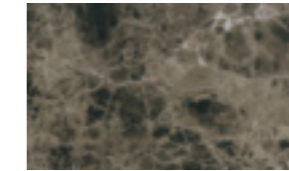
CAT. PREMIUM



040
Calacatta oro



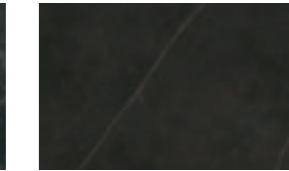
041
Noir desir



042
Emperador



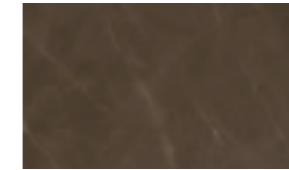
043
Nero greco



070
Calatorao silk



071
Abu dhabi silk



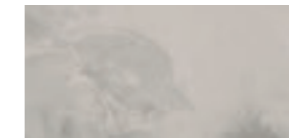
072
Pulpis silk

VETRO GRAPHIC PER TOP REPLAY

GRAPHIC GLASS FOR TOP REPLAY



Flower 01



Flower 02



Flower 03



Flower 04



Geometric 01



Geometric 02



Geometric 03



Geometric 04



Japan 01



Japan 02



Japan 03



Japan 04

COLORI

I colori del campionario Tomasella sono di riferimento per laccati lucidi e opachi, laccati canettè, laccati rigoletto, laccati poro aperto, vetro colorato lucido e satinato e metalli.

The Tomasella colour palette can be used for reference purposes for gloss and matt lacquers, reeded lacquers, rigoletto lacquers, open-pore lacquers, gloss and satin lacquered glass and metal finishes.

Esempio con bianco gesso / Example for chalk white



121
COD. 100
laccati opachi e lucidi
matt and gloss lacquers



121
COD. 100
laccati canettè
reeded lacquers



221
COD. 200
per laccati poro aperto
open-pore lacquers



321
COD. 300
vetri colorati lucidi
gloss lacquered glass



421
COD. 400
vetri colorati satinati
satin lacquered glass



Bianco gesso / Chalk white
121
221
321
421



Platino / Platinum
162
262
362
462



Madreperla / Mother of pearl
124
224
324
424



Canapa / Hemp
150
250
350
450



Ghiaccio / Ice
173
273
373
473



Basalto / Basalt
177
277
377
477



Bromo / Bromite
176
276
376
476



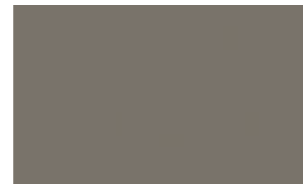
Carta da zucchero / Blue grey
155
255
355
455



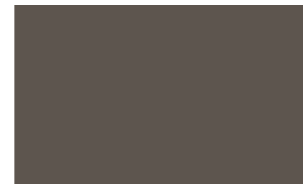
Hot / Hot grey
127
227
327
427



Arena
178
278
378
478



Grigio Piacenza / Piacenza grey
130
230
330
430



Fango / Mud brown
161
261
361
461



Mimetic / Mimetic green
166
266
366
466



Onice / Onyx
167
267
367
467



Mirto / Myrtle
165
265
365
465



Bosco / Forest green
168
268
368
468



Pomice / Pumice
152
252
352
452



Salina / Salt grey
163
263
363
463



Fumo / Smoky grey
174
274
374
474



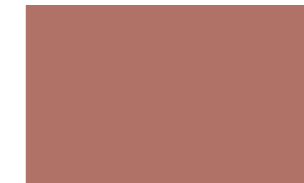
Lava
175
275
375
475



Salvia / Sage
159
259
359
459



Zafferano / Saffron
158
258
358
458



Rubino / Ruby red
172
272
372
472



Bordeaux / Burgundy
156
256
356
456



Smoke
128
228
328
428



Antracite / Anthracite
160
260
360
460



Ardesia / Slate
164
264
364
464



Nero / Black
131
231
331
431



Curcuma / Turmeric
169
269
369
469



Terracotta
170
270
370
470



Tabasco
171
271
371
471



Pesca / Peach
157
257
357
457

Páginas de síntesis
Descriptifs
Seitenübersicht

Textos en español,
francés y alemán

Textes en espagnol,
français et allemand

Texte in Spanisch,
Französisch und Deutsch

MADERA / BOIS / HOLZ

p. 06



MORFEO contenedores.
CÓMODA lacado mate bromo 176.
Mesitas de noche madera roble carbón.
Sifonieras lacado mate humo 174.

MORFEO meubles de chambre.
Commode laquée brome 176 mat.
Chevets en bois chêne charbon.
Semainiers laqués fumée 174 mat.

MORFEO Beimöbel.
Kommode matt lackiert Bromo 176.
Nachtische Holz Eiche Kohlegrau.
Hochkommoden matt lackiert Rauchgrau 174.

p. 08



MORFEO contenedor.
CÓMODA lacado mate bromo 176.
LOFT butaca - CARUSO mesita
BOLLE espejo.

MORFEO meuble de chambre.
Commode laquée brome 176 mat.
LOFT fauteuil - CARUSO table basse.
BOLLE miroir.

MORFEO Beimöbel.
Kommode matt lackiert Bromo 176.
LOFT Sessel - CARUSO Beistelltisch
BOLLE Spiegel.

p. 12



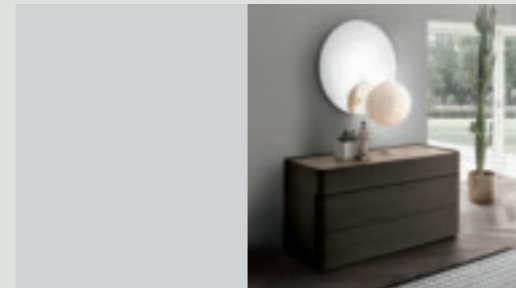
PASS contenedores.
CÓMODA madera roble moka.
Mesita de noche lacado mate bromo 176.
Mesitas de noche madera roble arena.
Sifonieras lacado brillante tabasco 171.

PASS meuble de chambre.
Commode en bois chêne moka.
Chevet laqué brome 176 mat.
Chevets en bois chêne sable.
Semainiers laqués tabasco 171 brillant.

PASS Beimöbel.
Kommode Holz Eiche Mokka.
Nachtisch matt lackiert Bromo 176
Nachtische Holz Eiche Sand.
Hochkommoden glänzend lackiert Tabasco 171.

MADERA / BOIS / HOLZ

p. 21



BRANDO contenedor.
Mesitas de noche y cómoda madera roble moka.
Encimera gres cat. Elegance fokos tierra.
BOLLE espejo.

BRANDO meuble de chambre.
Chevets et commode en bois chêne moka.
Plateau en grès cat. elegance fokos terre.
BOLLE miroir.

BRANDO Beimöbel.
Nachtische und Kommode Holz Eiche Mokka.
Abdeckplatte Gres Kat. Elegance Fokos Terra.
BOLLE Spiegel.

p. 22



BRANDO contenedor.
Mesita de noche madera roble moka, encimera gres cat. Elegance amani.
EROS cama.

BRANDO meuble de chambre.
Chevet en bois chêne moka, plateau en grès cat. elegance amani.
EROS lit.

BRANDO Beimöbel.
Nachtisch Holz Eiche Mokka, Abdeckplatte Gres Kat. Elegance Amani.
EROS Bett.

p. 24



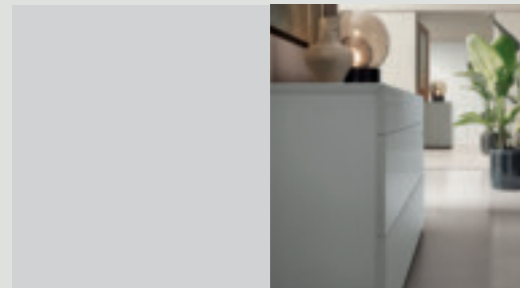
DOLCEVITA contenedores.
CÓMODA sin base lacado mate salina 163.
Mesitas de noche en madera roble carbón, base madera roble carbón.
CÓMODA lacado mate hot 127, base madera roble moka.
Sifonier madera roble moka, base madera roble moka.

DOLCEVITA meubles de chambre.
Commode sans piètement laquée salina 163 mat.
Chevets en bois chêne charbon avec piètement en chêne charbon, piètement en bois chêne charbon. Commode laquée hot 127 mat avec piètement en bois chêne moka. Semainier en bois chêne moka avec piètement en bois chêne moka.

DOLCEVITA Beimöbel.
Kommode ohne Grundgestell matt lackiert Salzgrau 163
Nachtische aus Holz Eiche Kohlegrau, Grundgestell Holz Eiche Kohlegrau, Kommode matt lackiert Hot 127, Grundgestell Holz Eiche Mokka. Hochkommode Holz Eiche Mokka, Grundgestell Holz Eiche Mokka.

MADERA / BOIS / HOLZ

p. 15



PASS contenedor.
CÓMODA lacado humo mate 174.

PASS meuble de chambre.
Commode laquée fumée 174 mat.

PASS Beimöbel.
Kommode matt lackiert Rauchgrau 174.

p. 16



PASS contenedores.
Mesitas de noche madera roble moka.
DALIA cama.

PASS meubles de chambre.
Chevets en bois chêne moka.
DALIA lit.

PASS Beimöbel.
Nachtische Holz Eiche Mokka.
DALIA Bett.

p. 18



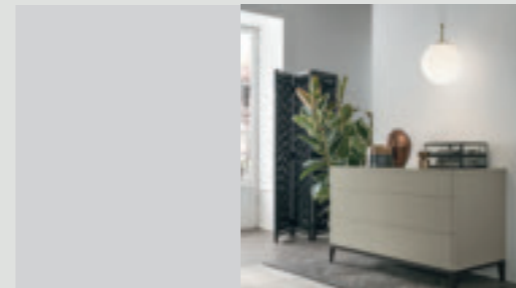
BRANDO contenedores.
CÓMODA roble moka, encimera gres cat. elegance urban marble. Mesita de noche madera roble arena, encimera cat. premium calacatta oro.
Sifonieras madera roble moka, encimera cat. premium emperador.

BRANDO meubles de chambre.
Commode en bois chêne moka, plateau en grès cat. elegance urban marble. Chevet en bois chêne sable, plateau cat. premium calacatta oro. Semainiers en bois chêne moka, plateau cat. premium emperador.

BRANDO Beimöbel.
Kommode Holz Eiche Mokka, Abdeckplatte Gres Kat. Elegance Urban Marble. Nachtisch Holz Eiche Sand, Abdeckplatte Kat. Premium Calacatta Oro. Hochkommoden Holz Eiche Mokka, Abdeckplatte Kat. Premium Emperador.

MADERA / BOIS / HOLZ

p. 27



DOLCEVITA contenedor.
CÓMODA lacado mate hot 127 y base en madera roble carbón.

DOLCEVITA meuble de chambre.
Commode laquée hot 127 mat avec piètement en bois chêne charbon.

DOLCEVITA Beimöbel.
Kommode matt lackiert Hot 127 und Grundgestell Holz Eiche Kohlegrau.

p. 28



DOLCEVITA contenedor.
CÓMODA madera roble moka.
GUCCINO puf.

DOLCEVITA meuble de chambre.
Commode en bois chêne moka.
GUCCINO pouf.

DOLCEVITA Beimöbel.
Kommode Holz Eiche Mokka.
GUCCINO Hocker.

p. 30



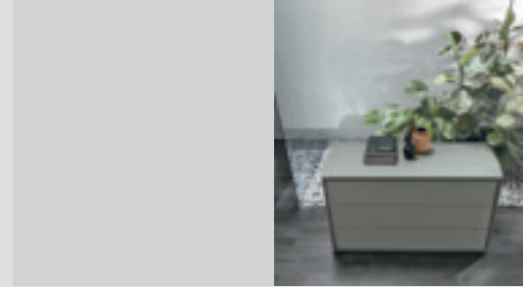
TIVOLI contenedores.
CÓMODA lacado mate hielo 173.
Mesitas de noche en madera roble carbón.
Sifonier lacado mate bromo 176.
BOLLE espejo.

TIVOLI meubles de chambre.
Commode laquée givre 173 mat.
Chevets en bois chêne charbon.
Semainier laqué brome 176 mat.
BOLLE miroir.

TIVOLI Beimöbel.
Kommode matt lackiert Eis 173.
Nachtische aus Holz Eiche Kohlegrau
Hochkommode matt lackiert Bromo 176.
BOLLE Spiegel.

MADERA / BOIS / HOLZ

p. 33



TIVOLI contenedor.
CÓMODO lacado mate azul niño 155.

TIVOLI meuble de chambre.
Commode laquée bleu pastel 155 mat.

TIVOLI Beimöbel.
Kommode matt lackiert Pastellblau 155.

p. 34



BOGART contenedores.
CÓMODO madera roble moka.
Mesitas de noche madera roble moka.
Sifonieres lacado mate salina 163.

BOGART meubles de chambre.
Commode en bois chêne moka.
Chevets en bois chêne moka.
Semainiers laqués basalte 177 mat.

BOGART Beimöbel.
Kommode Holz Eiche Mokka.
Nachttische Holz Eiche Mokka.
Hochkommoden matt lackiert Basaltgrau 177.

p. 37



BOGART contenedor.
CÓMODO madera roble moka.

BOGART meuble de chambre.
Commode en bois chêne moka.

BOGART Beimöbel.
Kommode Holz Eiche Mokka.

TEXTURIZADOS / TEXTURÉS / RAU

p. 44

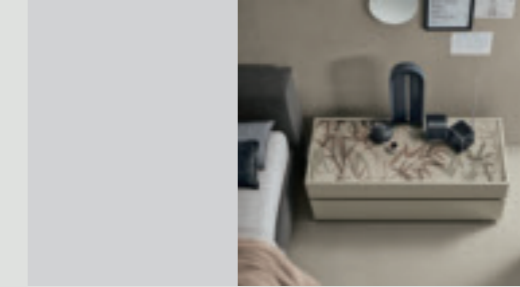


REPLAY contenedor.
Composición texturizado cemento cantera, texturizado roble moka,
encimera texturizado roble moka.
SKYLINE cama.

REPLAY meubles de chambre.
Zusammenstellung Rau Zement Cava,
Rau Eiche Mokka, Abdeckplatte Rau Eiche Mokka.
SKYLINE lit.

REPLAY Beimöbel.
Zusammenstellung Rau Zement Cava,
Rau Eiche Mokka, Abdeckplatte Rau Eiche Mokka.
SKYLINE Bett.

p. 47

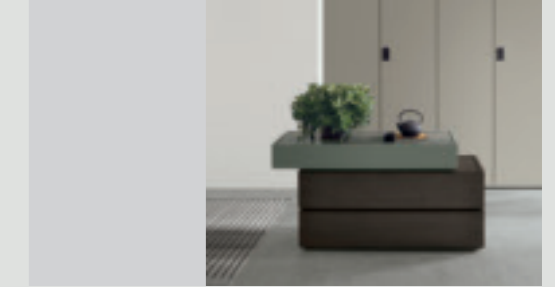


REPLAY contenedor.
Mesita de noche texturizado mate arena,
encimera de cristal con decoración Japan 03.
STRONG cama.

REPLAY meuble de chambre.
Chevet en texturé mat arena, plateau en verre avec décor
graphique Japan 03.
STRONG lit.

REPLAY Beimöbel.
Nachttisch Rau matt Arena, Abdeckplatte aus Glas mit
Grafikmuster Japan 03.
STRONG Bett.

p. 49



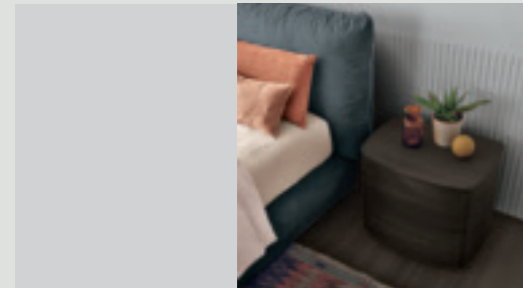
REPLAY GRES contenedor.
CÓMODO lacado mate basalte 177 y texturizado roble moka.
Encimera gres cat. Elegance fokos plomo.
LISCIA armario.

REPLAY GRES meuble de chambre.
Commode laquée basalte 177 mat et texturé chêne moka.
Plateau en grès cat. Elegance Fokos piombo.
LISCIA armoire.

REPLAY GRES Beimöbel.
Kommode matt lackiert Basaltgrau 177 und Rau Eiche Mokka.
Abdeckplatte Gres Kat. Elegance Fokos Piombo.
LISCIA Schrank.

MADERA / BOIS / HOLZ

p. 39



BOGART contenedor.
Mesita de noche madera roble moka.
SOGNO cama.

BOGART meuble de chambre.
Chevet en bois chêne moka.
SOGNO lit.

BOGART Beimöbel.
Nachttisch Holz Eiche Mokka.
SOGNO Bett.

TEXTURIZADOS / TEXTURÉS / RAU

p. 42



REPLAY contenedores.
CÓMODO texturizado roble arena, lacado mate bromo 175,
encimera roble arena.

Mesita de noche texturizado roble carbón, lacado acabado
mate azafrán 158, encimera decoración Japan 01.
CÓMODO texturizado piasentina foncé, texturizado roble carbón,
encimera texturizado roble carbón.
Mesita de noche texturizado piasentina oscura,
encimera texturizado nogal ámbar.
Sifonieres lacado mate azafrán 158, encimera de cristal satinado
azafrán 458. Mesita de noche texturizado nogal ámbar, encimera
texturizado alpaca.

REPLAY meubles de chambre.
Commode en texturé chêne sable et laquée brome 175 mat,
plateau en texturé chêne sable.
Chevet en texturé chêne charbon et laqué finition safran 158 mat,
plateau avec décor graphique Japan Japan 01.
Commode en texturé piasentina foncé et texturé chêne charbon,
plateau en texturé chêne charbon.
Chevet en texturé piasentina foncé, plateau en texturé noyer ambre.
Semainiers laqués safran 158 mat, plateau en verre satiné safran 458.
Chevet en texturé noyer ambre, plateau en texturé alpaca

REPLAY Beimöbel.
Kommode Rau Eiche Sand, matt lackiert Bromo 175,
Abdeckplatte Eiche Sand. Nachttisch Rau Eiche Kohlegrau,
Ausführung matt lackiert Safrangelb 158,
Abdeckplatte Grafikmuster Japan 01.
Kommode Rau Piasentinastein dunkel, Rau Eiche Kohlegrau,
Abdeckplatte Rau Eiche Kohlegrau.
Nachttisch Rau Piasentinastein dunkel, Abdeckplatte Rau Nussbaum
Bernstein.
Hochkommoden Ausführung matt Safrangelb 158, Abdeckplatte
satinieretes Glas Safrangelb 458. Nachttisch Rau Nussbaum Bernstein,
Abdeckplatte Rau Alpaca.

TEXTURIZADOS / TEXTURÉS / RAU

p. 50

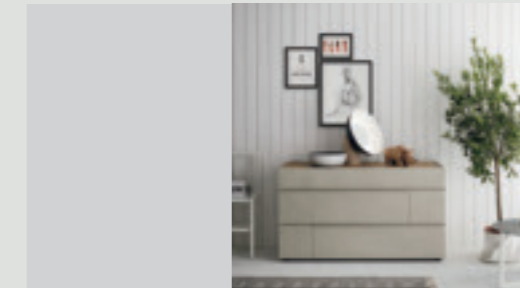


HASHTAG contenedores.
CÓMODO texturizado nogal ámbar, perfiles lava 175, encimera cristal
brillante lava 375.
Mesitas de noche lacado mate hielo 173,
perfiles hielo 173, encimera nogal ámbar.
Sifonieres lacado mate tabasco 171, perfiles tabasco 171, encimera
cristal satinado tabasco 471.

HASHTAG meubles de chambre.
Commode en texturé noyer ambre, profils lave 175, plateau en verre
brillant lave 375.
Chevets laqués givre 173 mat, profils givre 173, plateau noyer ambre.
Semainiers laqués tabasco 171 mat, profils tabasco 171, plateau en
verre satiné tabasco 471.

HASHTAG Beimöbel.
Kommode Rau Nussbaum Bernstein, Profile Lava 175,
Abdeckplatte glänzendem Glas Lava 375.
Nachttische matt lackiert Eis 173, Profile Eis 173,
Abdeckplatte Nussbaum Bernstein.
Hochkommoden matt lackiert Tabasco 171, Profile
Tabasco 171, Abdeckplatte satinieretes Glas Tabasco 471.

p. 53



HASHTAG contenedor.
CÓMODO texturizado cemento cantera,
perfiles a juego y encimera texturizado con nudos claro.
JOY DECOR mesita - KALISTA barra hidráulica.

HASHTAG meuble de chambre.
Commode en texturé ciment carrière, plateau en texturé chêne à nœuds clair.
profils dans la même teinte et plateau en texturé chêne à nœuds clair.
JOY DECOR table basse - KALISTA chaise valet de chambre

HASHTAG Beimöbel.
Kommode Rau Zement Cava, Profile
in gleicher Farbe und Abdeckplatte Rau astig hell.
JOY DECOR Beistelltisch - KALISTA Ablagestuhl

p. 54



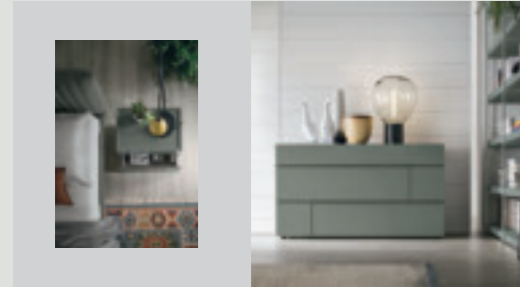
HASHTAG contenedores.
Mesitas de noche texturizado mate arena, encimera texturizado roble
moka y perfiles antracita 160.
DIAGONAL cama.

HASHTAG meubles de chambre.
Chevets en texturé arena mat, plateau en texturé chêne moka et profils
en anthracite 160.
DIAGONAL lit.

HASHTAG Beimöbel.
Nachttische Rau matt Arena, Abdeckplatte Rau Eiche Mokka
und Profil Anthrazit 160.
DIAGONAL Bett.

TEXTURIZADOS / TEXTURÉS / RAU

p. 56



HASHTAG contenedores.
Mesita de noche y cómoda lacado mate basalto 177, encimera lacado mate basalto 177 y perfiles antracita 160.
BRAVO PLUS cama.
FORTEBRACCIO librería.

HASHTAG meubles de chambre.
Chevet et commode laqués basalte 177 mat, plateau laqué basalte 177 mat et profils anthracite 160.
BRAVO PLUS lit.
FORTEBRACCIO bibliothèque.

HASHTAG Beimöbel. Nachttisch und Kommode matt lackiert Basaltgrau 177, Abdeckplatte matt lackiert Basaltgrau 177 und Profile Anthrazit 160.
BRAVO PLUS Bett.
FORTEBRACCIO Bücherregal.

p. 58

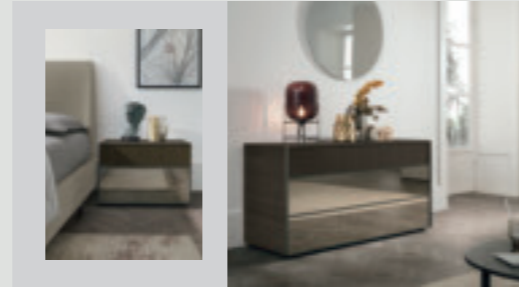


VINCI contenedores.
Cómoda texturizado piasentina oscura, texturizado roble moka, perfiles metal antracita 160.
Mesitas de noche roble arena canetté, lacado mate mirto 165, perfiles metal mirto 165.
Sifoniers lacado mate arena 178, perfiles metal antracita 160.

VINCI meubles de chambre.
Commode en texturé piasentina foncé et texturé chêne moka, profils en métal anthracite 160.
Chevets en chêne strié et laqués myrte 165 mat, profils en métal myrte 165.
Semainiers laqués arena 178 mat, profils en métal anthracite 160.

VINCI Beimöbel.
Kommode Rau Piasentinastein dunkel, Rau Eiche Mokka, Profile aus Metall Anthrazit 160.
Nachttische Eiche Sand Canetté, matt lackiert Myrte 165, Profile aus Metall Myrte 165.
Hochkommoden matt lackiert Arena 178, Profile aus Metall Anthrazit 160.

p. 60



VINCI contenedores.
Cómoda y mesita de noche texturizado roble moka, roble moka cannetté, espejo bronceado 382 y perfiles metal antracita.
BOLLE espejo.
DALIA cama.

VINCI meubles de chambre.
Commode et chevet en texturé chêne moka, chêne moka strié, miroir bronze 382 et profils en métal anthracite.
BOLLE miroir.
DALIA lit.

VINCI Beimöbel.
Kommode und Nachttisch Rau Eiche Mokka, Eiche Mokka Canetté, Spiegel in Bronzoptik 382 und Profile aus Metall Anthrazit.
BOLLE Spiegel.
DALIA Bett.

TEXTURIZADOS / TEXTURÉS / RAU

p. 68

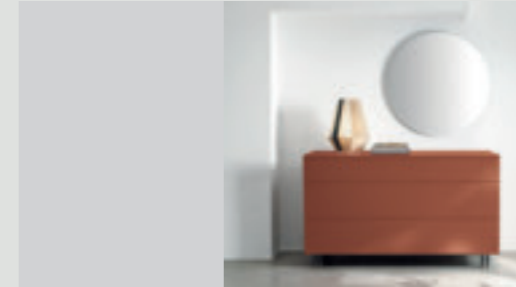


ARGO contenedor.
Mesita de noche texturizado roble carbón.
DALIA cama.

ARGO meuble de chambre.
Chevet en texturé chêne charbon.
DALIA lit.

ARGO Beimöbel.
Nachttisch Rau Eiche Kohlegrau.
DALIA Bett.

p. 71



ARGO contenedores.
Cómoda lacado mate tabasco 171.
Base Tracks metal antracita / latón.
BOLLE espejo.

ARGO meubles de chambre.
Commode laquée tabasco 171 mat.
Piètement Tracks en métal anthracite / laiton.
BOLLE miroir.

ARGO Beimöbel.
Kommode matt lackiert Tabasco 171.
Grundgestell Tracks aus Metall Anthrazit/Messing.
BOLLE Spiegel.

p. 72



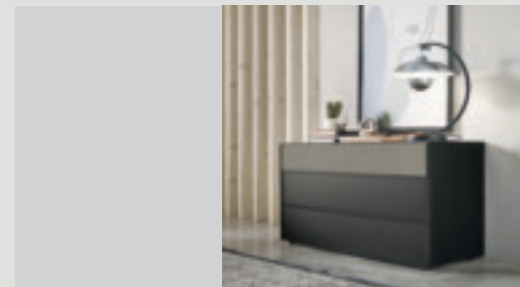
SIR contenedores.
Cómoda texturizado canvas, bandeja texturizado nogal ámbar.
Mesitas de noche texturizado roble carbón, bandeja texturizado roble carbón.
Sifoniers texturizado mate basalto, bandeja texturizado mate basalto.

SIR meubles de chambre.
Commode en texturé canvas, plateau à rebords en texturé noyer ambre.
Chevets en texturé chêne charbon, plateau à rebords en texturé chêne charbon.
Semainiers en texturé basalte mat, plateau à rebords en texturé basalte mat.

SIR Beimöbel.
Kommode Rau Canvas, Tablett Rau Nussbaum Bernstein.
Nachttische Rau Eiche Kohlegrau, Tablett Rau Eiche Kohlegrau.
Hochkommoden Rau matt Basaltgrau, Tablett Rau matt Basaltgrau.

TEXTURIZADOS / TEXTURÉS / RAU

p. 63



VINCI contenedor.
Cómoda texturizado roble carbón, texturizado piasentina oscura y perfil metal antracita.
VISAGE 1 cuadro lienzo.

VINCI meuble de chambre.
Commode en texturé chêne charbon et texturé piasentina foncé, profil en métal anthracite.
VISAGE 1 tableau sur toile.

VINCI Beimöbel.
Kommode Rau Eiche Kohlegrau, Rau Piasentinastein dunkel und Profil aus Metall Anthrazit.
VISAGE 1 Leinwandbild.

p. 64

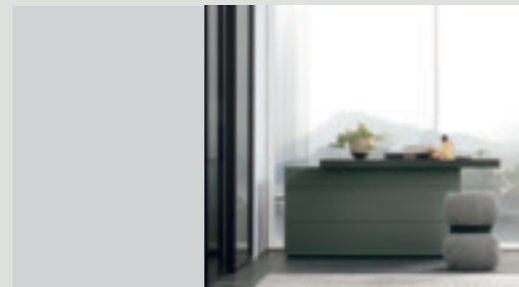


ARGO contenedores.
Cómoda lacado mate hielo 178, encimera texturizado nogal ámbar.
Mesitas de noche texturizado roble moka, base Tracks metal antracita/latón. Mesitas de noche texturizado mate arena, encimera texturizado roble moka.
Sifonier lacado mate bosque 168.

ARGO meubles de chambre.
Commode laquée givre 178 mat, plateau en texturé noyer ambre.
Chevets en texturé chêne moka, piètement Tracks en métal anthracite / laiton.
Chevets en texturé arena mat, plateau en texturé chêne moka.
Semainier laqué vert forêt 168 mat.

ARGO Beimöbel.
Kommode matt lackiert Eis 178, Abdeckplatte Rau Nussbaum Bernstein.
Nachttische Rau Eiche Mokka, Grundgestell Tracks aus Metall Anthrazit/Messing. Nachttische Rau matt Arena, Abdeckplatte Rau Eiche Mokka. Hochkommode matt lackiert Waldgrün 168.

p. 67

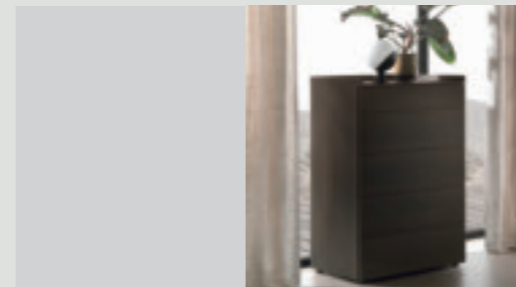


ARGO contenedor.
Cómoda con superficie extraíble texturizado roble carbón y lacado mate mirto 165.
GUCCINO puff.

ARGO meuble de chambre.
Commode avec plateau coulissant en texturé chêne charbon et en laqué myrte 165 mat.
GUCCINO pouf.

ARGO Beimöbel.
Kommode mit ausziehbarer Platte Rau Eiche Kohlegrau und matt lackiert Myrte 165.
GUCCINO Hocker.

p. 74

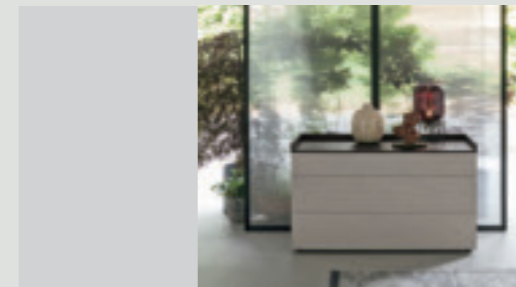


SIR contenedor.
Texturizado roble moka y encimera tipo bandeja texturizado roble moka.

SIR meuble de chambre.
Texturé chêne moka et plateau à rebords en texturé chêne moka.

SIR Beimöbel.
Rau Eiche Kohlegrau Mokka und Abdeckplatte in Tablettform Rau Eiche Mokka.

p. 76



SIR contenedor. Cómoda texturizado piasentina claro y encimera tipo bandeja texturizado roble carbón.

SIR meuble de chambre. Commode en texturé piasentina clair avec plateau à rebords en texturé chêne charbon.

SIR Beimöbel. Kommode Rau Piasentina hell und Abdeckplatte in Tablettform Rau Eiche Kohlegrau.

p. 78



ATHENA contenedor.
Cómoda texturizado cemento cantera, aplicación tirador texturizado nogal ámbar.
Mesita de noche lacado mate mirto 165, aplicación tirador cristal brillante mirto 365.
Mesitas de noche texturizado nogal ámbar, aplicación texturizado alpaca.
Sifonier texturizado roble moka, aplicación tirador cristal brillante mirto 365.

ATHENA meubles de chambre.
Commode en texturé ciment carrière, insert poignée en texturé noyer ambre.
Chevet laqué myrte 165 mat, insert poignée en verre brillant myrte 365.
Chevets en texturé noyer ambre, insert poignée en texturé alpaca.
Semainier en texturé chêne moka, insert poignée en verre brillant myrte 365.

ATHENA Beimöbel.
Kommode Rau Zement Cava, Griffesatz Rau Nussbaum Bernstein.
Nachttisch matt lackiert Myrte 165, Griffesatz glänzendes Glas Myrte 365.
Nachttische Rau Nussbaum Bernstein, Einsatz Rau Alpaca.
Hochkommode Rau Eiche Mokka, Griffesatz glänzendes Glas Myrte 365.

TEXTURIZADOS / TEXTURÉS / RAU

p. 80

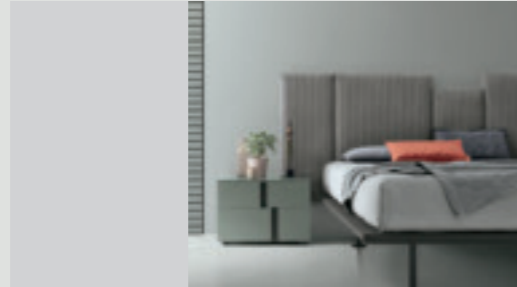


ATHENA contenedores.
CÓMODO texturizado cemento cantera y aplicación tirador texturizado nogal ámbar.

ATHENA meuble de chambre.
Commode en texturé ciment carrière, insert poignée en texturé noyer ambre.

ATHENA Beimgöbel.
Kommode Rau Zement Cava und Griffainsatz Rau Nussbaum Bernstein.

p. 82



ATHENA contenedor.
Mesitas de noche lacado mate basalto 177, aplicación tirador texturizado roble carbón.
SKYLINE cama.

ATHENA meuble de chambre.
Chevets laqués basalte 177 mat, insert poignée en texturé chêne charbon.
SKYLINE lit.

ATHENA Beimgöbel.
Nachttische matt lackiert Basaltgrau 177, Griffainsatz Rau Eiche Kohlegrau.
SKYLINE Bett.

p. 84



VIP contenedor.
CÓMODO texturizado roble arena, gola lacado mate bromo 176.
Mesitas de noche y gola lacado mate mirto 165.
Mesita de noche texturizado mate basalto, gola lacado mate basalto 177.
Sifonieras texturizado roble carbón, gola espejo 381.

VIP meubles de chambre..
Commode en texturé chêne sable, gorge laquée brome 176 mat.
Chevets et gorge laqués myrte 165 mat.
Chevet en texturé mat basalte, gorge laquée basalte 177 mat.
Semainiers en texturé chêne charbon, gorge miroir 381.

VIP Beimgöbel.
Kommode Rau Eiche Sand, Hohlkehle matt lackiert Bromo 176.
Nachttische und Hohlkehle matt lackiert Myrte 165.
Nachttisch Rau matt Basaltgrau, Hohlkehle matt lackiert Basaltgrau 177. Hochkommoden Rau Eiche Kohlegrau, Hohlkehle Spiegelglas 381.

TEXTURIZADOS / TEXTURÉS / RAU

p. 92



CAPITOL contenedor.
CÓMODO texturizado roble moka, lacado mate salina 163.
Mesitas de noche texturizado nogal ámbar, lacado mate salina 163.
Sifonier lacado mate basalto 177.

CAPITOL meubles de chambre.
Commode en texturé chêne moka et laquée salina 163 mat.
Chevets en texturé noyer ambre et laqués salina 163 mat.
Semainier laqué basalte 177 mat.

CAPITOL Beimgöbel.
Kommode Rau Eiche Mokka, matt lackiert Salzgrau 163.
Nachttische Rau Nussbaum Bernstein, matt lackiert Salzgrau 163.
Hochkommode matt lackiert Basaltgrau 177.

p. 94

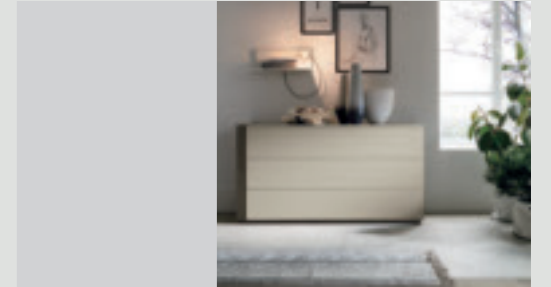


CAPITOL contenedor.
Mesita de noche texturizado mate basalto y texturizado roble moka.
SET cama.

CAPITOL meuble de chambre.
Chevet en texturé basalte mat et texturé chêne moka.
SET lit.

CAPITOL Beimgöbel.
Nachttisch Rau matt Basaltgrau und Rau Eiche Mokka.
SET Bett.

p. 96



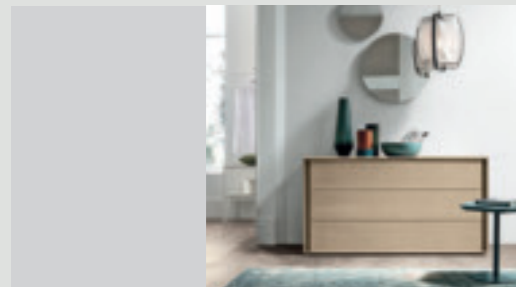
CAPITOL contenedor.
CÓMODO texturizado roble moka y lacado mate hot 127.

CAPITOL meuble de chambre.
Commode en texturé chêne moka et laquée hot 127 mat.

CAPITOL Beimgöbel.
Kommode Rau Eiche Mokka und matt lackiert Hot 127.

TEXTURIZADOS / TEXTURÉS / RAU

p. 86

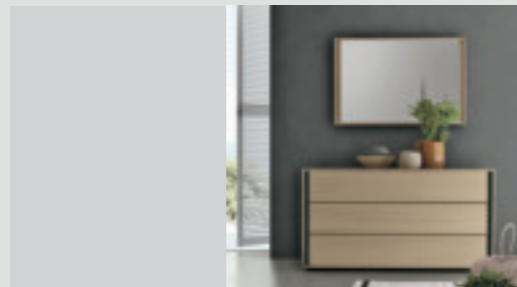


VIP contenedor.
CÓMODO y gola texturizado roble arena.
BOLLE espejos .

VIP meuble de chambre.
Commode et gorge en texturé chêne sable.
BOLLE miroirs – CARUSO table basse - KALISTA MIDI chaise valet de chambre

VIP Beimgöbel.
Kommode und Hohlkehle Rau Eiche Sand.
BOLLE Spiegel.

p. 88



VIP contenedores.
CÓMODO y espejo roble arena y gola en cristal brillante mirto 365.

VIP meubles de chambre.
Commode et miroir en texturé chêne sable. Gorge en verre brillant myrte 365.

VIP Beimgöbel. Kommode und Spiegel Rau Eiche Sand und Hohlkehle aus glänzendem Glas Myrte 365.

p. 90



VIP contenedores.
Mesitas de noche texturizado roble moka.
KEN cama.

VIP meubles de chambre.
Chevets en texturé chêne moka.
KEN lit.

VIP Beimgöbel.
Nachttische Rau Eiche Mokka.
KEN Bett.

TEXTURIZADOS / TEXTURÉS / RAU

p. 98

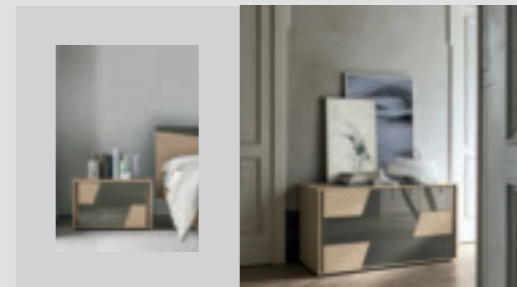


KROSS contenedor.
CÓMODO texturizado mate arena, cristal brillante arena 378.
Mesitas de noche texturizado roble moka, cristal arena brillante 378.
Sifonieras lacado mate rubí 172, cristal brillante rubí 372.

KROSS meubles de chambre.
Commode en texturé arena mat, verre brillant arena 378.
Chevets en texturé chêne moka, verre brillant arena 378.
Semainiers laqués rubis 172 mat, verre brillant rubis 372.

KROSS Beimgöbel.
Kommode Rau matt Arena, glänzendes Glas Arena 378.
Nachttische Rau Eiche Mokka, glänzendes Glas Arena 378.
Hochkommoden matt lackiert Rubinrot 172, glänzendes Glas Rubinrot 372.

p. 100



KROSS contenedores.
CÓMODO y mesitas de noche texturizado roble arena y cristal brillante smoke 328.
CHARLIE cama.

KROSS meubles de chambre.
Commode et chevets en texturé chêne sable et verre brillant smoke 328.
CHARLIE lit.

KROSS Beimgöbel.
Kommode und Nachttische Rau Eiche Sand und glänzendes Glas Smoke 328.
CHARLIE Bett.

E' vietata ogni riproduzione totale
e parziale in Italia e all'estero.

Reproduction of all or any part of this
publication in Italy or in any other
country is prohibited.

Tomasella Design Network

Thanks to:

Sedit

Astolfi 1963



product design
ROSSI & CO.
art direction and styling
ROSSI & CO.
graphic design
ROSSI & CO.
rendering
ROSSI & CO.
color separation
Z13
print
Grafiche Antiga Spa



tomasella.it